

## The Antique Pattern Library

For more information, please see our website at: <http://www.antiquepatternlibrary.org>



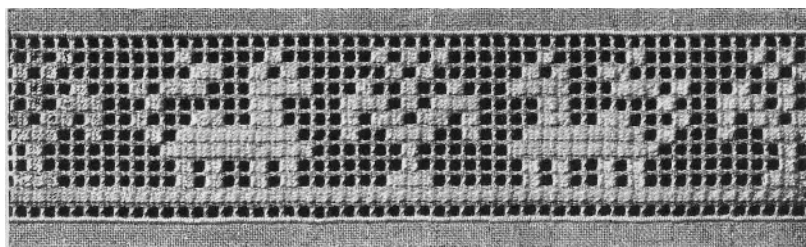
This is a scan of an antique book that is, to the best of our knowledge, in the public domain. The scan itself has been photo-edited for readability, and is licensed under the **Creative Commons** Attribution-NonCommercial-ShareAlike License. To view a copy of this license, visit <http://creativecommons.org/licenses/by-nc-sa/2.5/> or send a letter to Creative Commons, 559 Nathan Abbott Way, Stanford, California 94305, USA.

You may share copies or printouts of this scan freely. You may not sell copies or printouts.

Donated by  
Bhavani Harikrichnan

11.2007

**D.M.C  
LIBRARY**



**Drawn Thread Work – 2<sup>nd</sup> Series**

The great interest with which the publication of our first series of patterns of openwork on linen was received, and the requests addressed to us for a new collection, induced us to issue a second series comprising patterns which are sure to interest our readers.

This new publication consists of insertions of Slav design (plate I), and old Italian character (plates II and III), of Reticella openwork (plate IV), and old Spanish openwork (plate V), besides edgings in cut stitch (plates VI, VII and VIII). These are followed by plain grounds (plates IX and X), a ground with rosettes, resembling Teneriffe lace (plate XI) and a ground in cut stitch, with Reticella motives (plate XII).

This collection also contains patterns of checked openwork, closely resembling the patterns of embroidered net, which in fact can be used equally well for this kind of openwork; flowers and, animals most often form the subjects of these motives in the Renaissance style, and these can be adapted to squares and borders.

Plates XXIX to XXXII consist of simple openwork patterns, worked in Pearl cotton on coarse coloured linen; this kind of work is quickly done and produces a new and very original effect.

The uses to which openwork on linen can be put are many, occupying an important place in ladies' dress, household linen and furniture.

The patterns on plates I to III are suitable for ornamenting little finger napkins and tray-cloths, they may also be used for trimming blouses and aprons, collars, cuffs, caps, &c.

The edgings on plate V, easy to work, lend themselves exceptionally well to the trimming of such articles as deep collars, scarves, dress widths, &c.; on the other hand the patterns on plate IV, more laborious to work, are better adapted for the decoration of church linen and fine table and bed linen.

For napery, table-centres, dresser-cloths, towels, pincushions, night-dress bags, waistbands, &c., we recommend the patterns in cut stitch on plates VI to VIII, as well as the grounds on plates IX to XII.

The checked openwork embroideries (plates XIII to XXIII) are very strong and durable; they are intended for trimming table-cloths and napery of all kinds, bed and

pillow spreads, curtains and blinds, as well as for the trimming of church linen in general.

For furniture and upholstery, all such things as are not liable to be washed, such as carpets, cushions, lambrequins, eiderdowns, work bags &c., the patterns on plate XXIX to XXXII worked on coarse coloured linen will be found suitable.

In order to point out some uses to which these different patterns may be put, five plates will be found in this publication, representing various objects ornamented with the open-work reproduced on plates I to XXIII and XXIX to XXXII.

The general instructions necessary for the execution of work are contained in our first of patterns of openwork on linen; we therefore confine ourselves here to explaining the working of different kinds of checked openwork which, may not yet be known to our readers.

**Materials.** — Openwork is done on stuffs of which the warp and the woof threads are as far as possible of the same size, so that the spaces left by the withdrawal of the threads should be regular in form. For table, bed and dress linen, the different kinds of white, cream or ecru linen are used for embroidery. For decorative purposes coloured linens are preferable, woven of fine, medium fine, or coarse threads, which are to be had in a considerable variety of shades.

Tammy stuffs of all sorts serve for antimacassars, curtains and blinds; gauze and cambric for trimming articles of dress.

For the openwork, after the threads have been drawn out, use a strong twisted thread selected from among the D.M.C articles, either D.M.C Crochet cotton, 6 cord (Cordonnet 6 fils)(\*), D.M.C Crochet cotton, special quality (Cordonnet special), D.M.C Cotton lace thread (Fil a dentelles), D.M.C Alsatian thread (Fil d'Alsace), D.M.C Alsatian twist (Retors d'Alsace), D.M.C Alsatian cordonnet' (Cordonnet d'Alsace), D.M.C Alsatia, D.M.C Alsa, D.M.C Knotting cotton (Fil a pointer), D.M.C Flax lace thread (Un pour dentelles), D.M.C. Flax thread for knitting and crochet (ly in pour tricoter et crocheter). The size, of the thread should generally correspond with that of the threads of the stuff, but for those parts which are to stand out in special relief, a coarser thread should be used. For all the fillings and the decorative figures in darning stitch use a softfloss thread, such as D.M.C Special stranded cotton (Mouline special), or such slightly twisted threads as D.M.C Pearl cotton (Coton perle), D.M.C Alsatia, D.M.C Floss flax or flourishing thread (lin floche) and D.M.C Rayon for embroidery (Rayonne a broder), in the coarse numbers. Openwork on linen is generally done in one colour, white on white, or in the same colour as the stuff on which the work is done, but in any case we recommend white thread for cream and ecru stuffs and a slightly tinted thread for coloured stuffs.

Checked openwork is often done in a network of colours; red, blue, green, brown and yellow together, produce the best effect.

For the convenience of our readers and to render the reproduction of the patterns easier, each plate is preceded by instructions as to the materials to be employed.

(\*) The French names in brackets are those stamped on the labels of the D.M.C articles.



## Directions for the execution of the checked openwork.

The term checked openwork has been chosen to specify the kind of work the stuff foundation of which is transformed into a net or web by the withdrawal of warp and woof threads: the motives are reserved in the stuff or embroidered in the net by means of a plain stitch. To make the net you generally draw out the same number threads as you leave to form the clusters; if you want to get a very close net you may leave more threads for the clusters than you draw out for the openwork.

Each of our patterns is accompanied by the necessary directions as to the number of threads to be drawn out.

In the case of a piece of work of any importance it is a good plan to sketch or mark out the stitches and mark the threads to be drawn out with a coloured thread, so as to avoid mistakes in the cutting out of the threads.

### Work with motives reserved in the stuff (figs. 1 and 2).

For work in which the motives are reserved in the stuff, begin by tracing the outlines with back stitches.

These stitches which must be set in the middle of the edge which is to be embroidered over, are worked over as many threads of the stuff as you have counted for the formation of the clusters and the openwork. When the tracing is quite finished embroider it over with straight corded stitches over a foundation thread. These stitches must be set perpendicularly to the lines of the outline; only to form the corners, the stitches must be set slanting, directed towards the inside of the line that they are to enclose. After the outlines have been embroidered, you cut all the vertical and horizontal threads of the stuff which are to be drawn out to form the net.

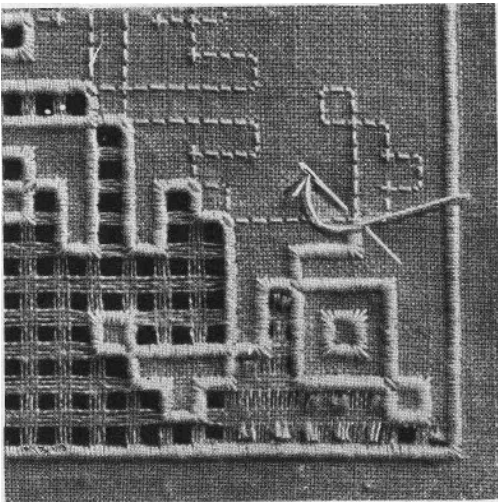


Fig.1. shows How to do the tracing, the embroidery of the outlines and the drawing out of the threads of the stuff.

Fig. 1 shows how to trace and embroider the outlines, as well as how to cut and draw out the threads of the stuff.

The net composed of clusters of threads and little squares of stuff is to be embroidered over in the way indicated by the pattern selected for

copying.

There are three ways of fastening the threads of the clusters:

1. Net with overcast clusters, see plates XIII, XIV, XVII, IX and XXII;
2. Net with corded clusters, see plates XV, XVI, XX and XXI;
3. Net with clusters secured by four-sided stitches, see plate XXIII.



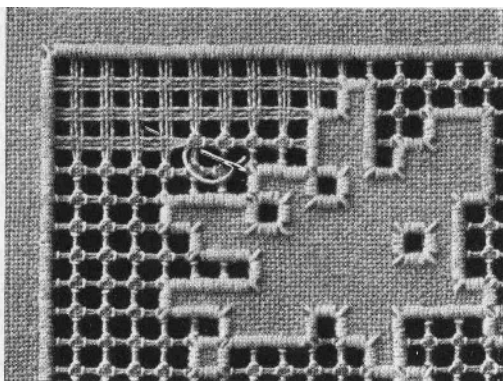


Fig. 2 shows the execution of a net secured by four-sided stitches. Beginning on the right make a vertical stitch downwards from above, on the left side of a little square of the stuff, then make

Fig 2 how to embroider the stuff with the four-sided stitch

a second vertical stitch

downwards on the right side of the square; these two stitches are completed top and bottom by two horizontal stitches from left to right.

Then slip your needle under the next square of stuff and as before, make the first vertical stitch.

Along the embroidered outlines secure the clusters by overcasting stitches, set near the corded edge.

### Pieces of work with motives embroidered in the net.

Besides work in which the motives are reserved in the stuff, the motives may be embroidered in the net, in the three different ways following:

1. Motives embroidered in linen stitch, see plates XVI and XVII;
2. Motives embroidered in darning stitch, see plates XIII, XIV, XIX and XX;
3. Motives embroidered in loop stitch, see plate XV.

Here follow the necessary directions for the above three kinds of motives.

### Work in which the motives are worked in linen stitch. (figs. 3 and 4). —

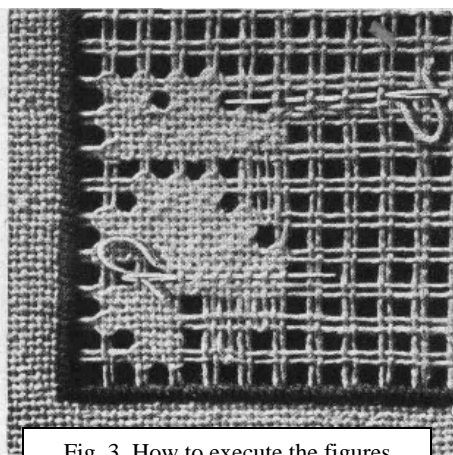


Fig. 3. How to execute the figures in linen stitch.

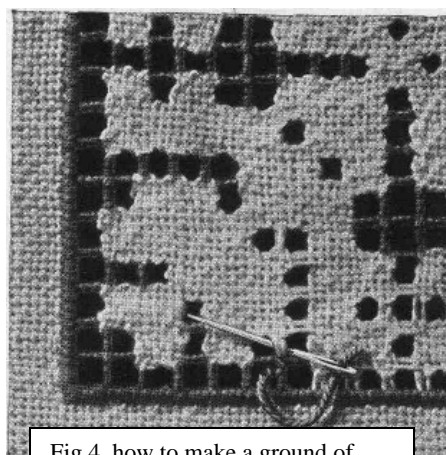


Fig 4. how to make a ground of overcast bars

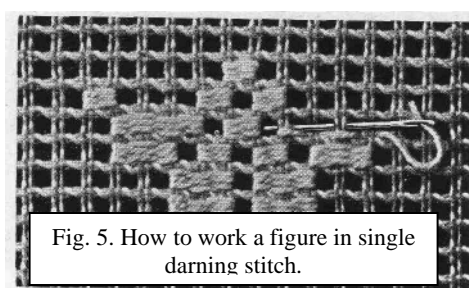
Here the first thing to do is to transform the whole inside of the stuff into a net. Only the edge of the pattern must be secured with corded stitches. To make the net

equal numbers of threads of the stuff must be drawn out and left, either two or four. The linen stitch is worked in this net, in two rows. The intersection of the threads is done in the usual way, taking up a thread on the needle and passing it over the next one.

Fig. 3 shows the working of a motive in linen stitch on a net of drawn threads; the top needle shows how to place the first row of stitches and the bottom one shows how to make the second row of stitches which intersects the first. When the motives in linen are finished, you embroider the net over, vertically and horizontally. The clusters may be embroidered over with a single overcasting stitch or transformed into corded bars by means of close corded stitches.

When the corded bars are done in the same shade as the stuff, the thread is carried from bar to bar at the back of the work; if on the contrary, you wish the ground of bars to be of a colour in marked contrast to the stuff, you embroider over the little squares of stuff with slanting stitches so that they are completely covered by the crossing of these stitches as seen in fig 4.

**Work in which the motives are worked in darning stitch** (figs. 5 and 6). - Here the

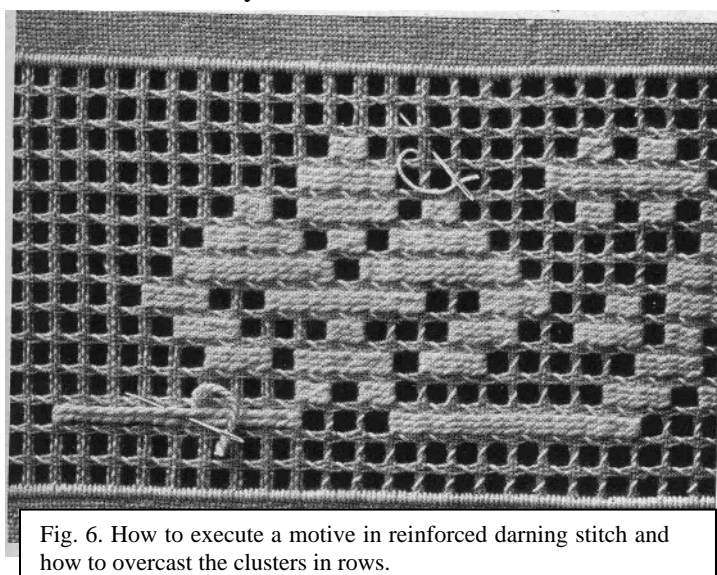


ground is transformed into a net, the same as is done in the case of a ground embroidered with linen stitch. The number of threads to be drawn out and left may vary between 2, 3 and 4 and the squares of stuff may consist of more threads than the number that has served for the openwork.

Before executing the motives in darning stitch, you must embroider over all the clusters in the same direction as the rows worked in darning

stitch.

The clusters may be overcast or transformed into corded bars, according to the work that is to be executed.



The darning stitch may be done in the two following ways: in single darning stitch in rows to and fro, taking up one cluster of threads on the needle and passing over the next one. According to the size of the thread used it will require two to four double rows to fill up one row of open spaces of the net; see fig. 5, which explains the working of the single darning stitch.

For the double darning stitch you have to carry your thread over the openwork squares that are to be filled; coming back you cover this thread over again with slanting stitches which you overcast at each square of the net as seen in fig. 6.

To obtain a close filling you set two or three rows, of stitches in each Series of open spaces. When all the motives in darning stitch are finished you must still overcast or cord in vertical rows all the clusters that are not embroidered over, see fig. 6.

**Work in which the motives are worked in loop stitch** (fig. 7). — Here also the ground

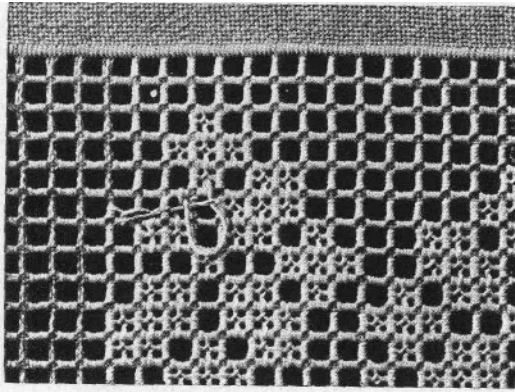


Fig.7. How to execute a motive in loop stitch.

must be entirely transformed into a net. You remove and leave 3 or 4 threads of the stuff, then you begin by cording the clusters in horizontal rows; for this kind of checked openwork you never use a ground of overcast clusters.

Whilst cording the clusters in vertical rows you execute at the same time the motives in loop stitch. Starting from the left and from the middle of a cluster to be corded you make first the bottom row of loops, then returning you interlace the loops of the top row with those of the bottom row, see fig. 7.

### **Openwork on linen done with the help of the sewing-machine.**

All the different kinds of openwork on linen can be done with the sewing-machine.

We do not give any directions for this work which is already so well known, but we advise our readers to regulate the tension of the shuttle thread carefully, as it needs to be much tighter for this kind of work than is generally necessary for sewing or machine made embroidery.

For single rows of openwork and corded bars the best material for the bobbin thread is either D.M.C Alsatian thread (Fit d'Alsace) Nos. 100 to 300, D.M.C Embroidery cotton, special quality (Coton a broder, qualite speciale) on reels, Nos 80 to 120; D.M.C Alsatian twist (Retors d'Alsace) Nos 30 to 60, D.M.C Alsatian Cordonnet (Cordonnet d'Alsace) Nos. 60 and 80 and D.M.C Alsa Nos. 40 and 60 should be used for the parts in darning stitch. For the shuttle thread take D.M.C Sewing-Machine cotton (Cable 6 fils) No. 150.

In addition to the plates in this album, a large selection of patterns for drawn thread work will be found in the following publications of the D.M.C Library: Drawn thread Work, *1st Series, Openwork Embroideries and Works of various kinds.*



**Directions for the execution of the patterns on Plate I.**  
**Two braids (figs. 8 and 10).**

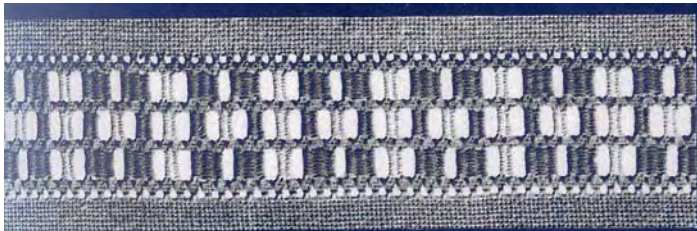


Figure 8.

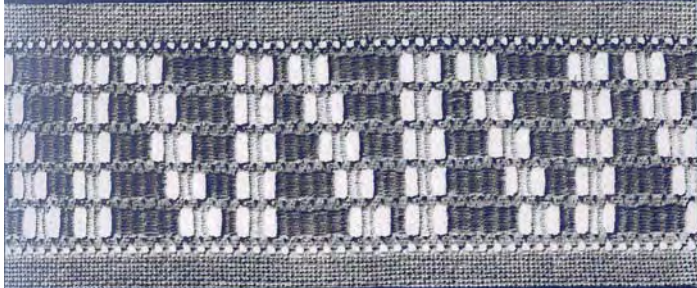


Figure 9.



Figure 10.

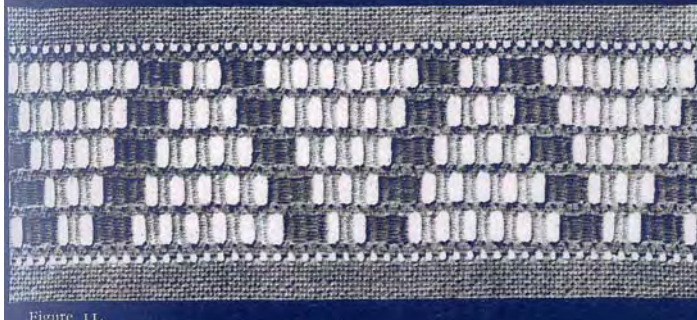


Figure 11.

**MATERIALS:** linen of medium coarseness; D.M.C Embroidery cotton, special quality (Colon a broder, qualite speciale) No. 16, in White and Garnet red 326 (\*)

Draw out 1 thread of the stuff, leave four times 3 threads, draw out three times 5 threads, then 1 thread more. Begin by making with white thread the little outside rows of openwork, drawing together each time 3 threads of the stuff, then ornament the inside bars with vertical stitches, separated from each other by one cluster of 3 threads of the stuff. The figures in darning stitch are executed in two shades; for the light stitches take white thread, for the dark stitches red thread.

**Two braids (figs. 9 and 11).**

**MATERIALS:** linen of medium coarseness; D.M.C Floss flax or flourishing thread (Lin floche) No. 8, in White and in Forget-me-not blue 825 (\*).

Draw out 1 thread of the stuff, leave six times 3 threads, and draw out five times 5 threads, then 1 thread more. Begin the work according to the description given for figs. 8 and 10. Take for the light stitches white thread and for the dark ones blue thread.

(\*) These numbers refer to the colours on the colour cards of the articles stamped with the D.M.C trade mark. These cards can be consulted at all the mercers and needlework shops.



Directions for the execution of the patterns on Plate II (\*)  
Four openwork insertions (figs. 12, 13, 14 and 15).

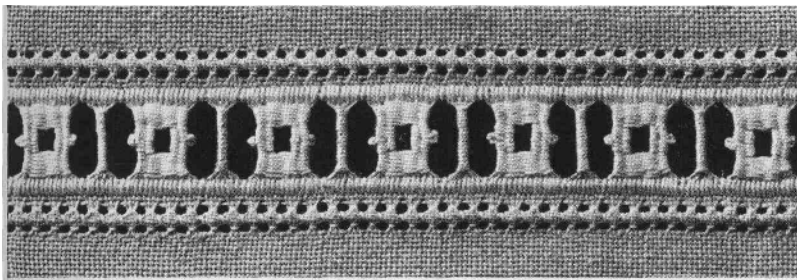


Figure 12.

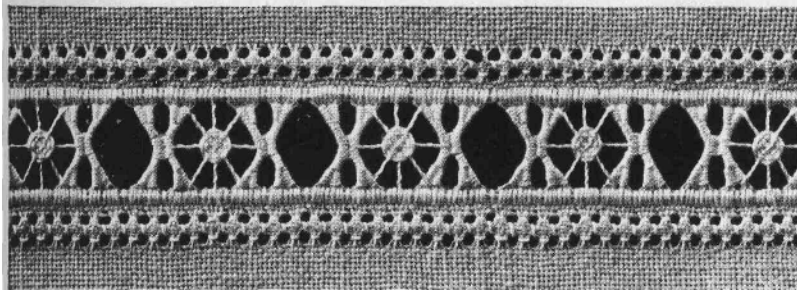


Figure 13.

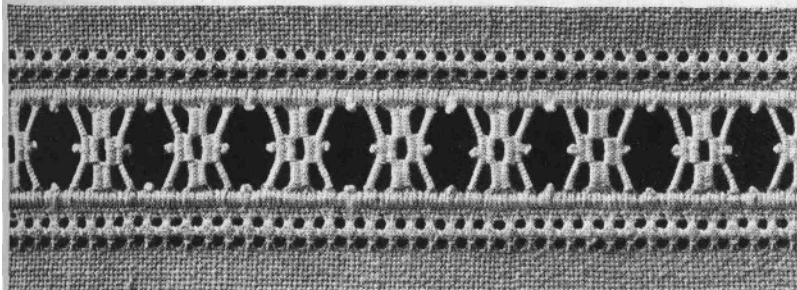


Figure 14.

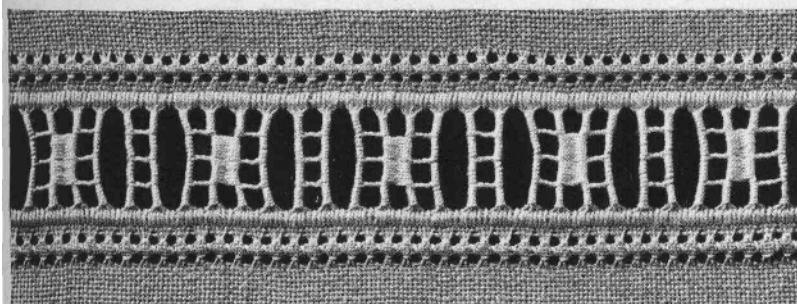


Figure 15.

**MATERIALS:** Linen of medium coarseness; D.M.C Pearl cotton (Coton perle) No. 5 and D.M.C Crochet cotton, special quality (Cordonnet special) No. 10, in White or in Cream.

Do the straight rows in corded stitch over 4 threads of the stuff, with D.M.C Pearl cotton No. 5, towards the outside leave 2 threads of the stuff, draw out 1 thread, leave 4 and draw out 1 thread more. Over the wide strips of 4 threads make the four-sided stitch with D.M.C Crochet cotton, special quality, No. 10. For the openwork insertion, fig. 12, draw out 14 threads and for the insertions, figs. 13 and 14, draw out 16 threads and for fig. 15, draw out 20 threads. The motives in corded and in darning stitch are to be done with D.M.C Pearl cotton No. 5.

(\*) Complementary directions for the execution of the patterns of this plate will be found in our 1st

Series of "Drawn thread Work", figs. 5 and 35 to 38.

### Directions for the execution of the patterns on Plate III.

Five openwork insertions (figs. 16, 17, 18, 19 and 20).

**MATERIALS:** -Linen of medium coarseness; D.M.C Alsatia No. 20 and D.M.C Crochet cotton, special quality (Cordonnet special) No. 20, in White or in Cream.

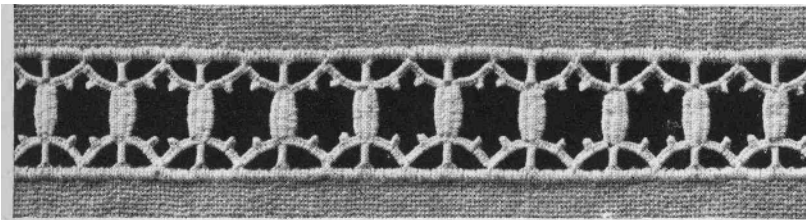


Figure 16.

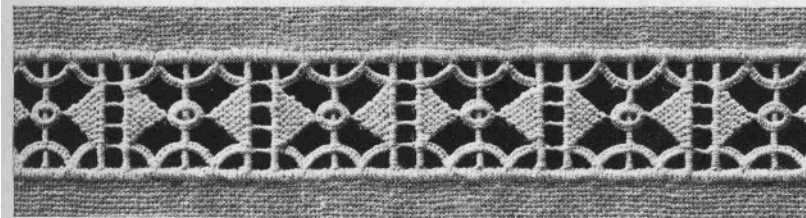


Figure 17.

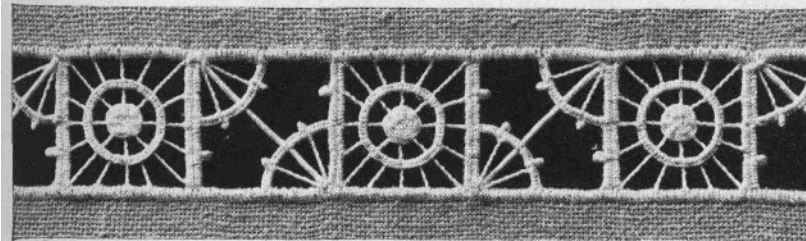


Figure 18.

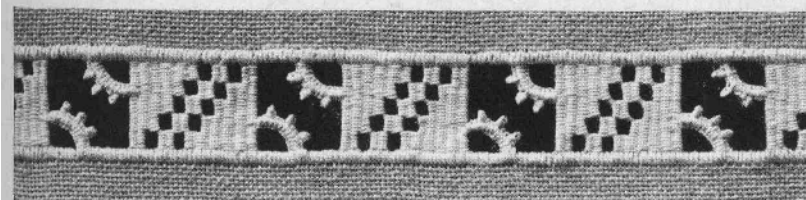
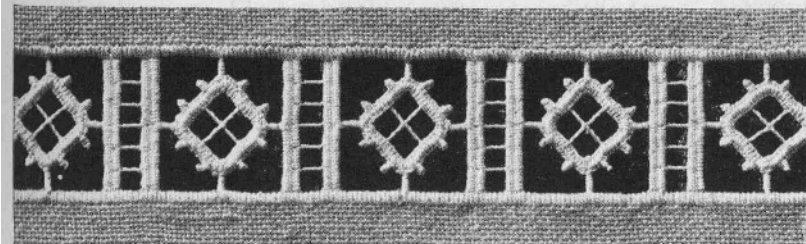


Figure 19.



Work the straight rows in corded stitch over 4 threads of the stuff, with, D.M.C Alsatia No. 20. For fig. 16, draw out 20 threads of the stuff, in length; in height leave, alternately 6 threads and draw out 10. For fig. 17, draw out 20 threads of the stuff, in length; in height, leave 4, draw out 2 threads, leave 4, draw out 9 threads, leave 4 and draw out 9. For fig. 18, draw out 24 threads of the stuff, in length; in height, leave 6 threads and draw out 24. For fig. 19, draw out 15 threads of the stuff, in length; in height, leave 30 and draw out 15. For fig. 20, draw out 24 threads of the stuff, in length; in height leave 6, draw out 2 threads, leave 6 and draw out 24. The motives in darning stitch, in corded stitch and in button-hole stitch are to be worked with D.M.C Crochet cotton, special quality, No. 20.



## Directions for the execution of the patterns on Plate IV.

### Two borders (figs. 21 and 22)

**MATERIALS:** Fine linen; D.M.C Crochet cotton, 6 cord (Cordonnet 6 fils) Nos. 50 and 80, in White or in Ecreu.

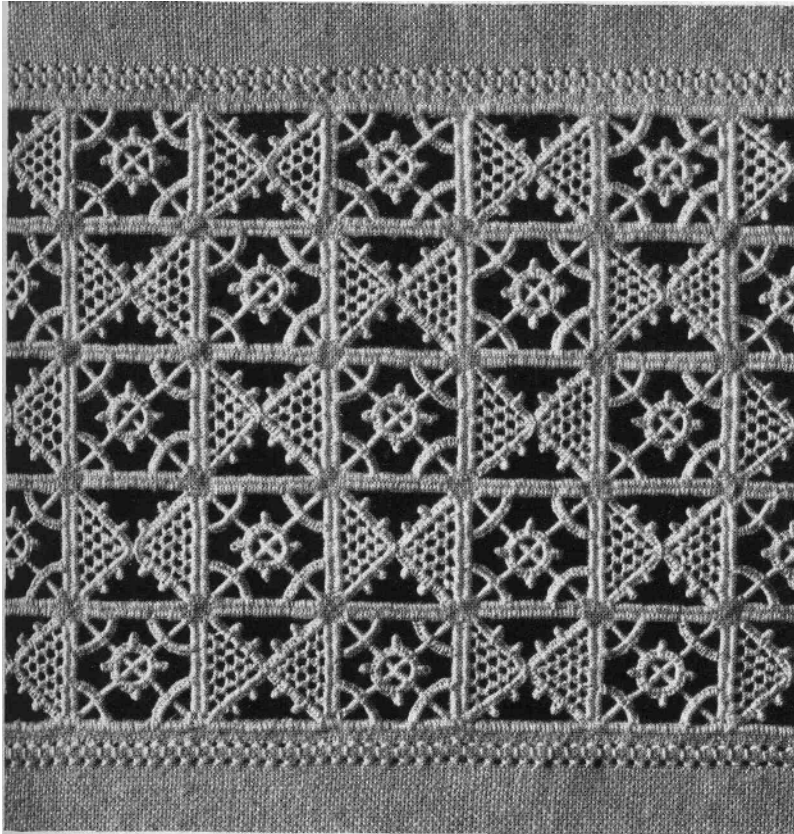


Figure 21.

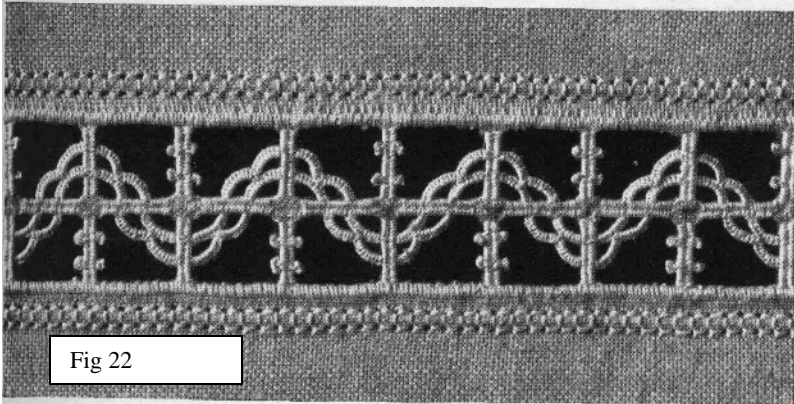


Fig 22

For the openwork ground of the border, fig. 21, draw out in the height and in the length, alternately, 24 threads of the stuff and leave 8. For the border, fig. 22, draw out in height and in length, alternately, 16 threads of the stuff and leave 8. Work the rows of corded stitch over 4 threads, of the stuff, then towards the outside, leave 4 threads, draw out 1, leave 4 threads and again draw out 1. Work the four-sided stitch over the bands of stuff, 4 threads in width. Do the openwork figures with D.M.C Crochet cotton, 6 cord, No. 50. excepting the filling of the triangles of fig. 21, for which use D.M.C Crochet cotton, 6 cord, No. 80.



## Directions for the execution of the patterns on Plate V.

### Two borders (figs. 23 and 24)

MATERIALS: -Linen of medium coarseness; D.M.C Flax lace thread (lin pour dentelles) No. 20, in White or in Ecrû.

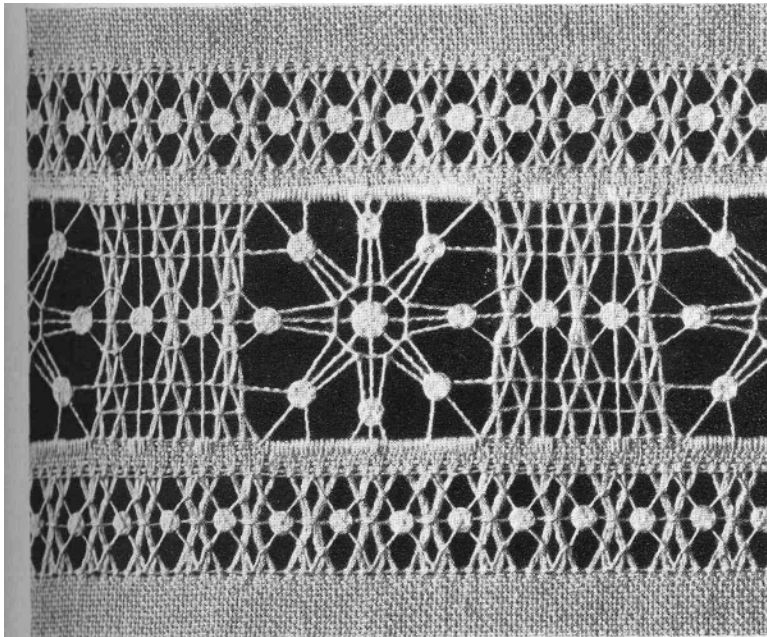


Figure 23.

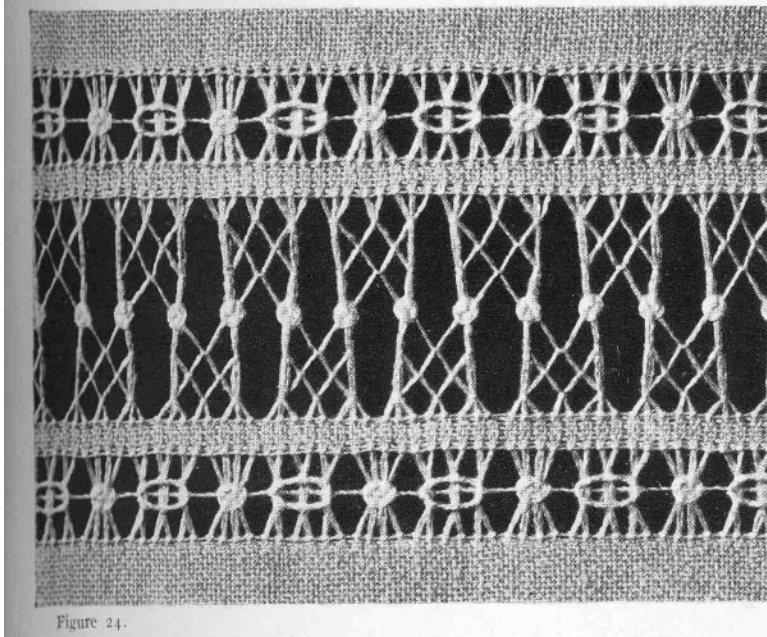


Figure 24.

For fig. 23 draw out 42 threads of the stuff, lengthways, for the wide strip of openwork and 18 threads for the two narrow ones, leaving 6 threads between each row. For the stars draw out 42 vertical threads and for the figures composed of knotted clusters leave three times 12 vertical threads and draw out twice 3 threads.

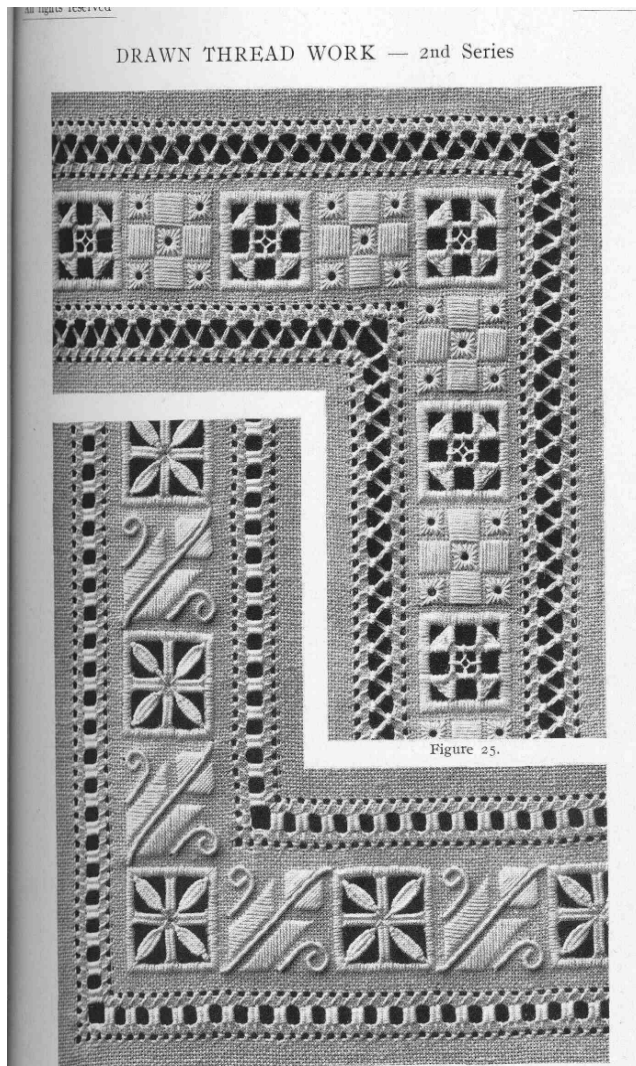
For the fig. 24 draw out 42 threads of the stuff, lengthways, for the wide openwork insertion and 16 threads for the narrow ones, leaving 6 threads between each.

The clusters formed of 3 threads of the stuff are to be knotted near the edge of the linen by means of chain stitches set contrariwise; then where the vertical threads are to be cut out, you embroider over the edges of the stuff with corded stitches, worked over 3 threads. Do the embroidery with D.M.C Flax lace thread No.20.

The two borders of this plate are very like “Teneriffe” work, and we refer our readers to our album “Teneriffe Lace work”, which contains a number of reproductions of laces and insertions quite suitable as patterns for **openwork on linen**.

## Directions for the execution of the patterns on Plate VI.

Two borders with corners (figs. 25 and 26).



**MATERIALS:** Linen of medium coarseness; D.M.C Crochet cotton, No. 5 and D.M.C Crochet cotton, special quality No. 10 in white or in cream.

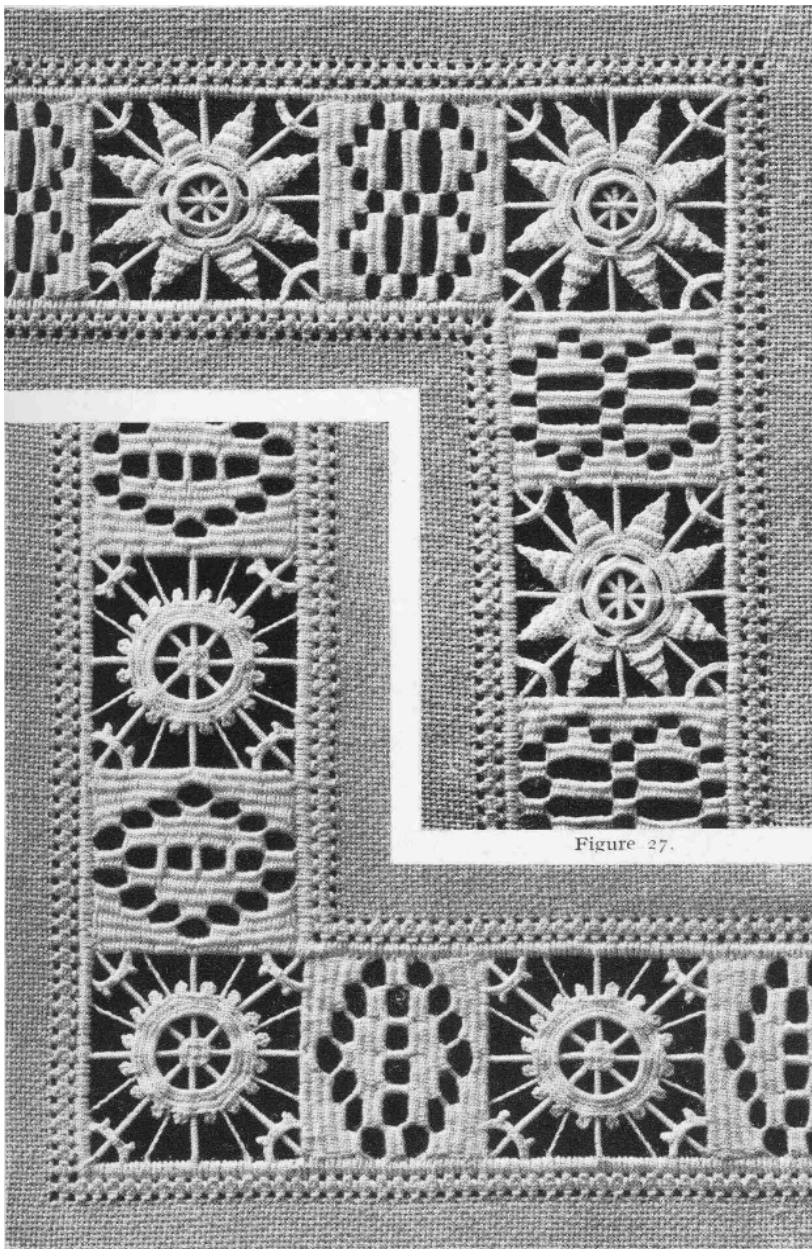
The inside band of the border, fig 25, numbers 36 threads of the stuff, in height; draw out 1 thread, leave 4 threads, draw out 8 threads, leave 4 threads, draw out 1 thread more. The narrow bands of openwork are done with D.M.C. crochet cotton, special quality, No. 10. The openwork squares are done over 28 threads of the stuff; make the framing in corded stitch over 4 threads of the stuff, with D.M.C Pearl Cotton No.5. Inside, draw out three times 4 threads and leave twice 4 threads of the stuff; the openwork star is worked with D.M.C Crochet Cotton, special quality, No.10. For the embroidered figures in flat stitch use D.M.C Pearl Cotton No. 5 and do the star stitches with D.M.C crochet Cotton, special quality no 10.

The inside band of the border, fig 26, numbers 42 threads of the stuff, in height; draw out 1 thread of the stuff, leave 4 threads, draw out 4 threads, leave 4 threads and draw out 1 thread more. Make the narrow bands of the openwork with D.M.C Crochet Cotton, special quality, No. 10. The openwork squares are made over 30 threads of the stuff; make the framing in corded stitch over 3 threads, in D.M.C Pearl Cotton No. 5. Inside this framing draw out 9 threads in the corners and leave 6 threads of the stuff in the middle, which are to be made into bars by means of darning stitches with D.M.C pearl cotton No. 5. The Oblique leaves, in darning stitch, are to be done in D.M.C Crochet cotton, special quality, No. 10. For the embroidered motives, work flat stitch with D.M.C pearl Cotton No. 5, and cord the stalks and tendrils with D.M.C Crochet Cotton, Special quality No. 10.



## Directions for the execution of the patterns on Plate VII.

Two borders with corners (figs. 27 and 28).



**MATERIALS:** Linen of medium Coarseness; D.M.C Alsatia No. 15 and D.M.C Crochet cotton, special quality (Cordonnet special) Nos. 10, 20 and 50, in White or in Cream.

For the openwork insertions draw out 36 threads of the stuff lengthways and in height, and leave only 36 vertical threads for the motives in darning stitch. Secure the edges with corded stitches set over 3 threads of the stuff, in D.M.C Alsatia No. 15; draw out 1 thread of the stuff, leave 3 threads, draw out 1 thread more; make the four-sided openwork stitch with D.M.C Crochet Cotton, special quality, No. 10 and the figures in darning stitch with D.M.C Alsatia No. 15. In the empty spaces place corded bars, worked

in D.M.C Crochet Cotton, special quality, No. 20, and fix over these bars the motives in crochet.

### STARS WITH PICOTS (Motives for the border of fig 27). –

For the crochet work use D.M.C Crochet Cotton, special quality, No.50 and for the cord D.M.C Crochet Cotton, special quality, No. 10.

**1<sup>st</sup> row:** over a double cord make a ring of 40 plain stitches; 1 single stitch on the first plain stitch, 2 chain stitches.

**2<sup>nd</sup> row:** \* over a single cord, 7 plain stitches, skip 4 of the lower row, 1 plain over the cord on the 5<sup>th</sup> plain stitch below; repeat 7 times from \*, 1 single stitch on the first plain stitch. Fasten off the threads.

**3<sup>rd</sup> row:** the scallops are worked in 7 rows to and fro: \*\* 7 plain on the 7 plain of a festoon (place stitches on the back loop of the stitches below), 1 chain – turn the work – skip the first stitch, 6 plain, 1 chain – turn the work – skip the first stitch, 5 plain, 1 chain – turn the work – skip the first stitch, 4 plain, 1 chain – turn the work – skip the first stitch, 3 plain, 1 chain – turn the work – skip the first stitch, 2 plain, 1 chain – turn the work – skip the first stitch, 1 plain. Fasten off the threads. Repeat from \*\*.

### **WHEEL WITH PICOTS** (motive for the border of fig. 28).

For the crochet work use D.M.C Crochet Cotton, special quality, No.50 and for the cord D.M.C Crochet Cotton, special quality, No. 10.

**1<sup>st</sup> row:** over a double cord make a ring of 64 plain stitches; 1 single stitch on the first plain stitch, 2 chain stitches.

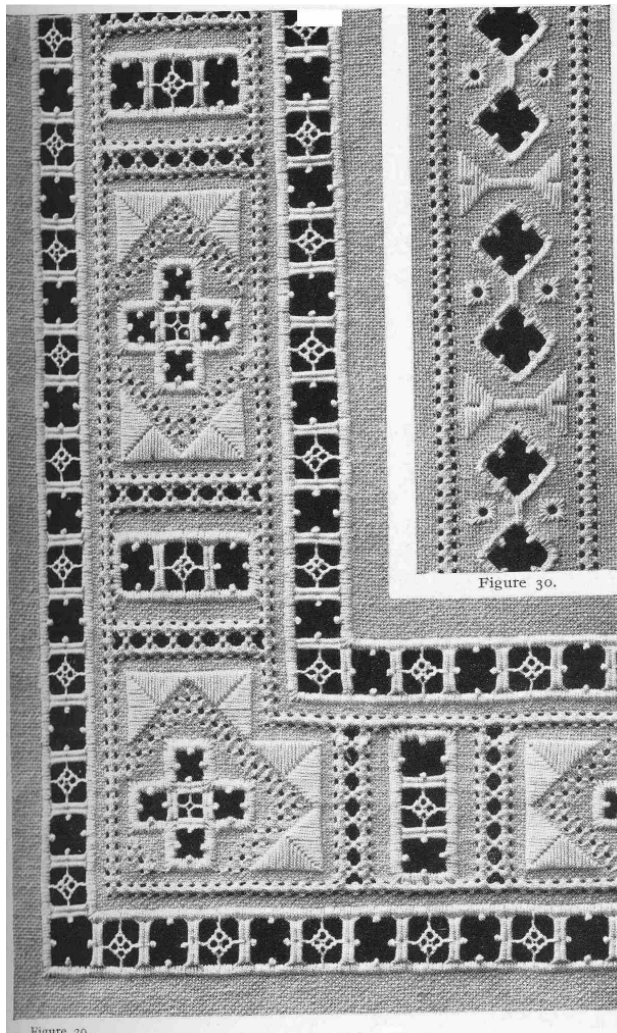
**2<sup>nd</sup> row:** over a single cord and on the stitches of the lower row, make sixteen times: 4 plain stitches and 1 picot, 1 single stitch on the first plain stitch. Fasten off the threads.



## Directions for the execution of the patterns on Plate VIII.

### Border with corner (figs. 29).

**MATERIALS:** Linen of medium Coarseness; D.M.C pearl Cotton, No. 5 and D.M.C Crochet cotton, 6 cord Nos. 5 and 10 in White or in Ecu.



Begin the rows of the four-sided openwork stitches which are made over 4 threads of the stuff, in D.M.C crochet cotton, 6 cord, No. 5. Then make the openwork crosses by drawing out three times 8 vertical and 8 horizontal threads of the stuff and leaving twice 4 threads for the bars in darning stitch. For the wide openwork between the crosses of the border draw out first 12 vertical threads, then draw out 3 times 8 horizontal threads leaving twice 8 threads of the stuff. The framing of the openwork parts is done in corded stitches over 4 threads of the stuff, with D.M.C Pearl Cotton No. 5. the bars in darning stitch and the lace stitches are done with D.M.C crochet Cotton, 6 cord, No. 10. Draw out 4 threads of the stuff for the narrow bands with knotted clusters. The embroidery in flat stitch is done with D.M.C pearl Cotton No. 5. Leave 4 threads free between the middle band and the two rows which are to be worked in the same way as the wide

openwork between the crosses.

### Border ( fig. 30)

**MATERIALS:** Linen of medium Coarseness; D.M.C pearl Cotton, No. 5 and D.M.C Crochet cotton, special quality Nos. 5 and 10 in White or in Cream.

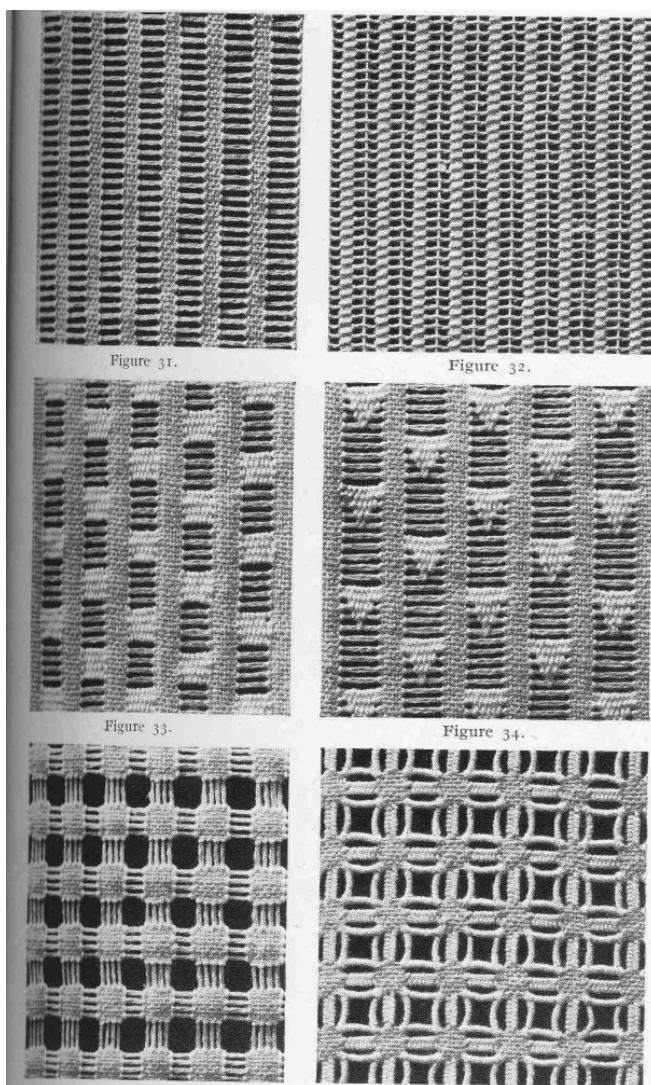
The inside band numbers 36 threads of the stuff, in width; draw out 1 thread, leave 4 threads, draw out 1 thread more. Do the four-sided openwork stitch with D.M.C Crochet Cotton, special quality No. 5, over 4 threads of the stuff. The figures in flat stitch are to be done with D.M.C pearl Cotton No. 5 and the star stitches with D.M.C Crochet Cotton, special quality No. 5. Trace the outlines of the openwork squares with 6 slanting back stitches worked over 2 threads of the stuff. Cut the stuff inside and buttonhole the edges with D.M.C Crochet Cotton special quality, No. 10.



## Directions for the execution of the patterns on Plate IX.

Six grounds (figs. 31, 32, 33, 34, 35 and 36).

MATERIALS: Linen of medium Coarseness; D.M.C pearl Cotton, No. 8 and D.M.C Crochet cotton, 6 cord No. 15 in White or in Ecu.



For the ground, fig 31, draw out and leave, alternately 5 vertical threads of the stuff. Edge the bands of the stuff with crossed back stitches, made over 2 threads of the stuff, with D.M.C Pearl cotton No. 8.

For the ground, fig 32, draw out and leave, alternately, 4 threads of the stuff. Ornament the bands of the stuff with horizontal stitches done with D.M.C pearl Cotton No. 8, separated by 2 vertical threads of stuff. Draw the disengaged threads opposite ways and run a thread of D.M.C Crochet Cotton, 6 cord, No. 15. through the clusters.

For the ground, fig 33, draw out 6 threads and leave 8 vertical ones; for the ground in fig 34, draw out 8 threads and leave 6 vertical ones. Edge the bands of the stuff with crossed back stitches and ornament the openwork bands with figures in darning stitch done with D.M.C pearl Cotton No. 8.

For the ground, fig 35, draw out and leave, alternately 4

vertical and 4 horizontal threads of the stuff and leave 8 threads. Edge the squares of stuff with crossed back stitches worked over 2 threads of the stuff, with D.M.C Pearl Cotton No. 8.

For the ground, fig 36, draw out alternately 5 vertical threads and 5 horizontal threads and leave 8 threads. Work with D.M.C pearl Cotton No. 8 bars in darning stitch over the 3<sup>rd</sup>, 4<sup>th</sup>, 5<sup>th</sup> and 6<sup>th</sup> of the 8 free threads, then surround the outside threads with corded stitches and join the bars in the corners together by two slanting stitches.

## Directions for the execution of the patterns on Plate X.

Two grounds (figs. 37 and 38).

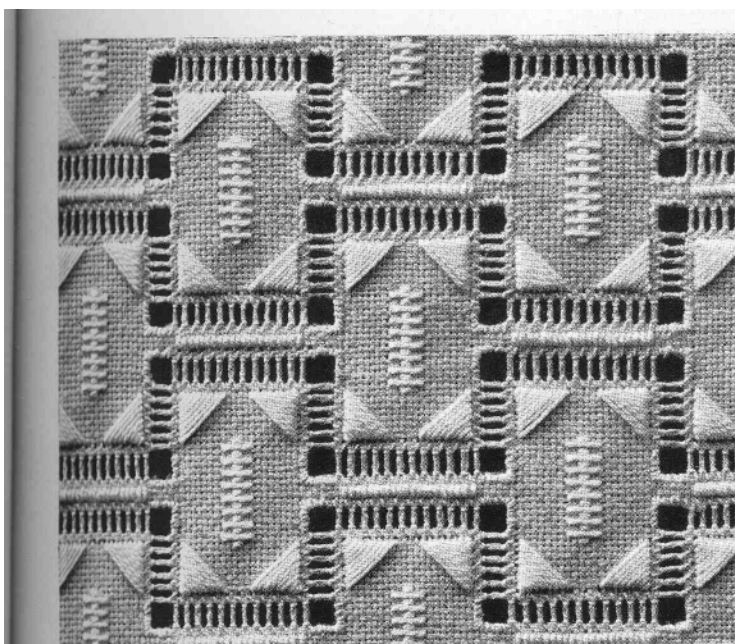
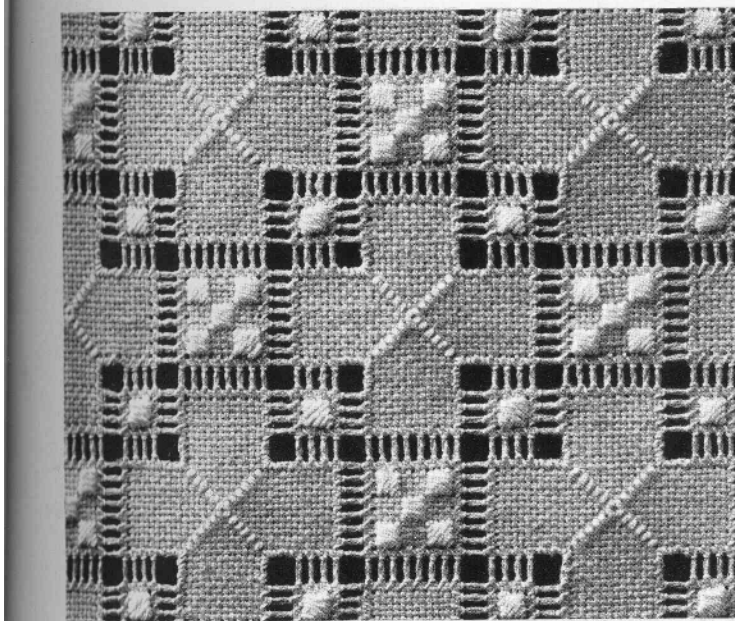


Figure 37.



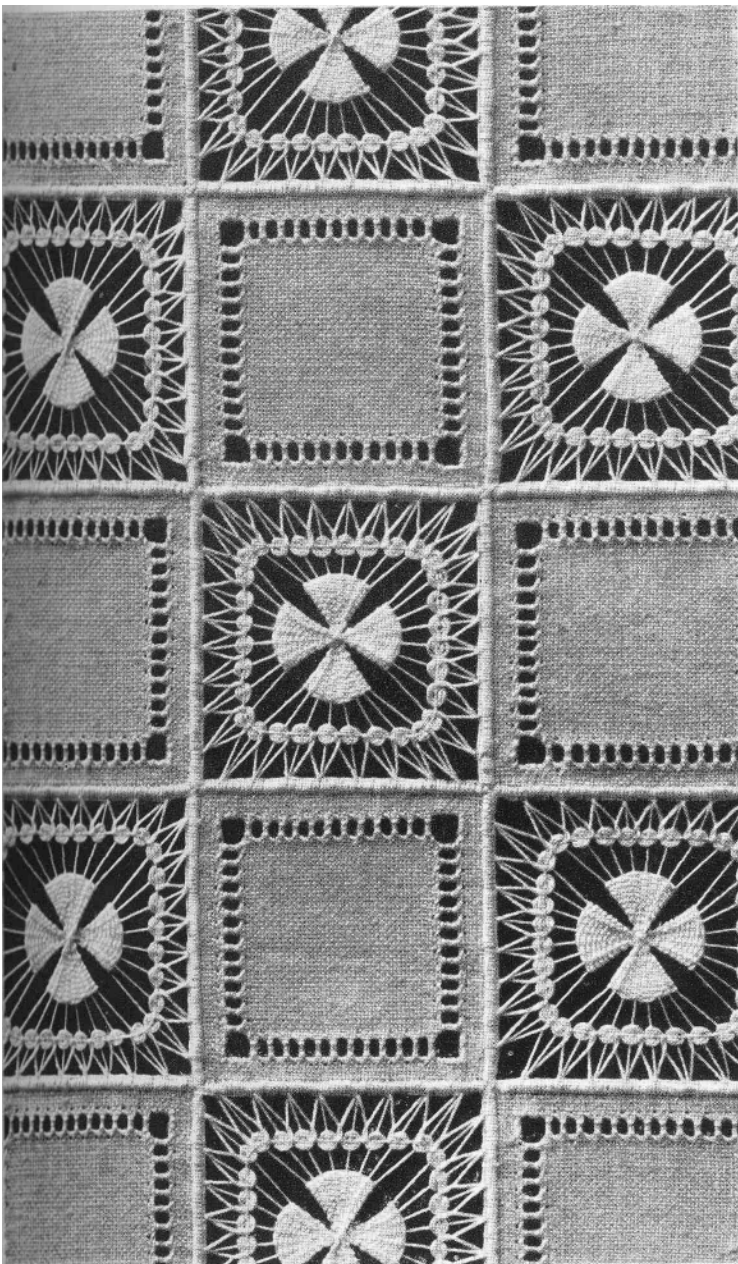
**MATERIALS:** Linen of medium Coarseness; D.M.C pearl Cotton, No. 3 and D.M.C Crochet cotton, special quality No. 10 in White or in cream.

For the rows of ladder stitch, draw out either three vertical or three horizontal threads of the stuff, according to the direction the row is to take. Make seam stitches over 2 threads of the stuff with D.M.C Crochet Cotton, special quality, No.10; fasten the threads of the stuff at the corners with corded stitches. Do the embroidery in flat stitches with D.M.C Pearl Cotton No: 3.

(\*) Complementary directions for the execution of the patterns of this plate will be found in our Ist Series of "Drawn Thread work" figs 1, 3 and 63.



**Directions for the execution of the patterns on Plate XI.**  
**Ground (figs. 39).**



**MATERIALS:** Fine linen; D.M.C Alsatia, Nos. 25 and 40 and D.M.C Crochet cotton, 6 cord No. 50 in White or in Ecu.

The openwork squares measure 4 centimeters. The button-hole stitches, which secure the edges of the stuff are worked over 4 threads, with D.M.C Alsatia No. 40. Make the network of threads adorned with little wheels with D.M.C Crochet Cotton, 6 cord, No. 50 and the crosses in darning stitch with D.M.C Alsatia No. 25. For the rows of ladder stitch, in the linen squares, draw out 5 threads of the stuff and collect 4 disengaged threads together with seam stitches made with D.M.C Alsatia No. 40.

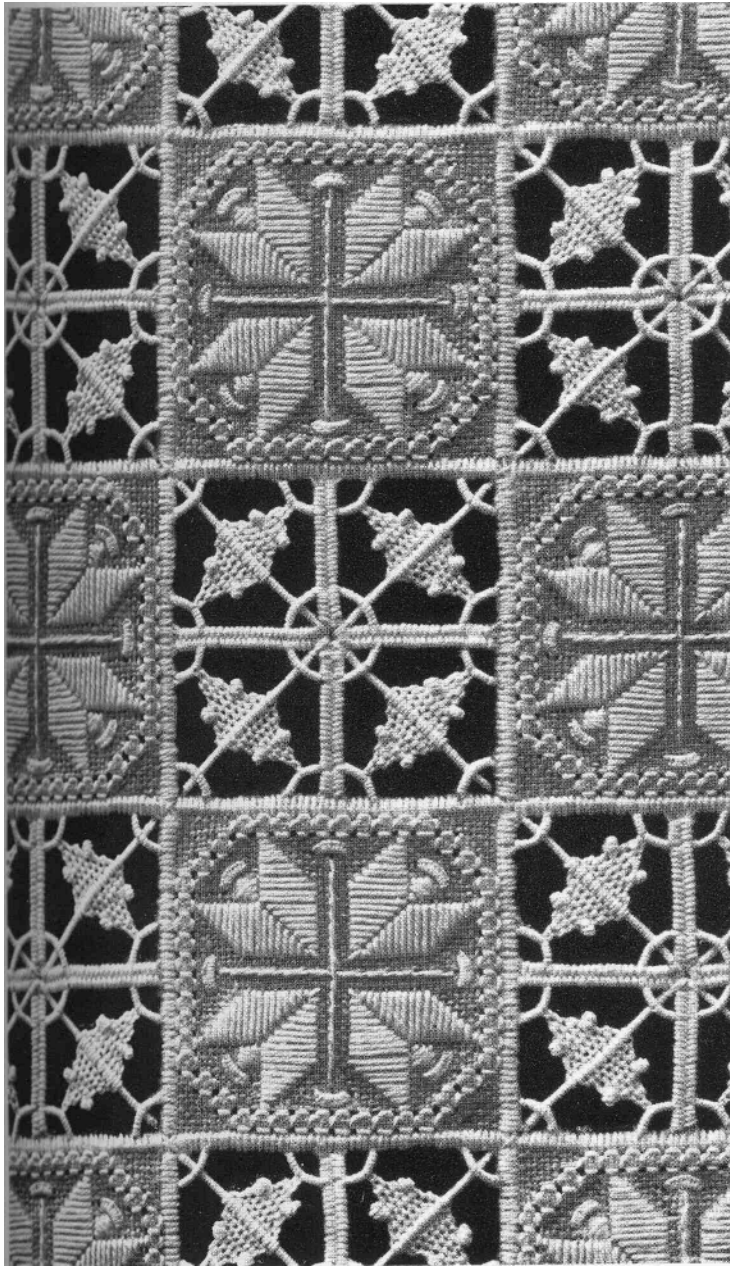
The openwork squares of this ground closely resemble "Teneriffe" work and we refer our readers to our album "Teneriffe Lace work", which contains a series of reproductions of wheels and

squares which may serve as patterns for **openwork on linen.**

## Directions for the execution of the patterns on Plate XII.

### Ground (fig. 40).

**MATERIALS:** Linen of medium Coarseness; D.M.C pearl Cotton, No. 5 and D.M.C Crochet cotton, special quality No. 10 and 20, in White or in cream.



Make the edges in corded stitches over 3 threads of the stuff, with D.M.C pearl Cotton No. 5, then make the embroidered squares; the four-sided openwork stitch is made over 3 threads of the stuff with D.M.C Crochet Cotton, special quality, No. 10; for the embroidery in flat stitch use D.M.C Pearl Cotton No. 5 and for the little ornaments in button-hole stitch D.M.C Crochet Cotton, special quality, No. 20. For the openwork squares draw out at the corners 21 threads of the stuff and in the middle leave 6 threads, which are to be formed into bars by means of darning stitches made with D.M.C Crochet Cotton, special quality, No.10. Make the corded bars and the lace stitches with D.M.C Crochet cotton, special quality, No. 20.



## Directions for the execution of the patterns on Plate XIII.

Three borders (figs. 41, 42 and 43).

**MATERIALS:** Linen of medium Coarseness; D.M.C pearl Cotton, No. 3 and D.M.C Alsatia, special quality No. 15 in White or in cream.

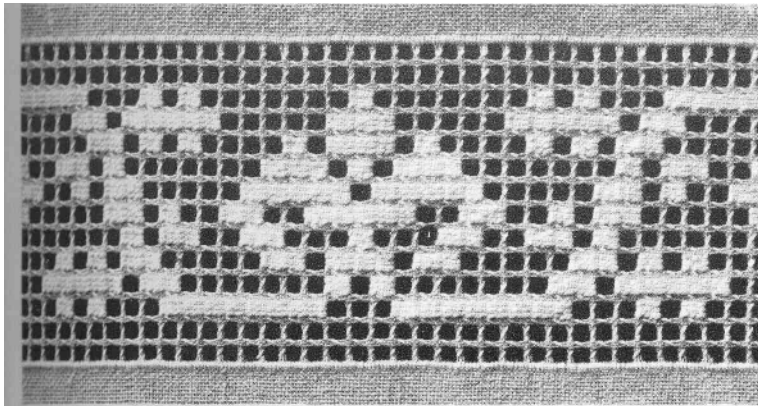


Figure 41.

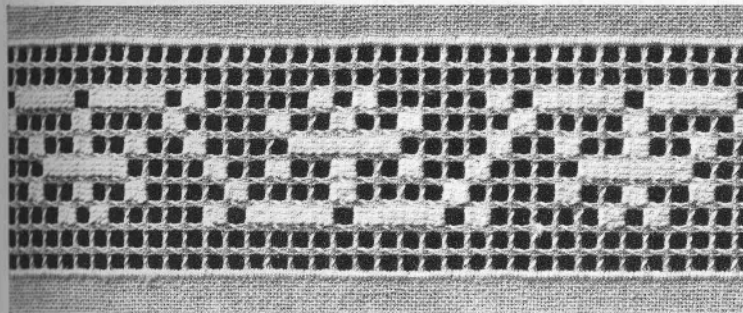
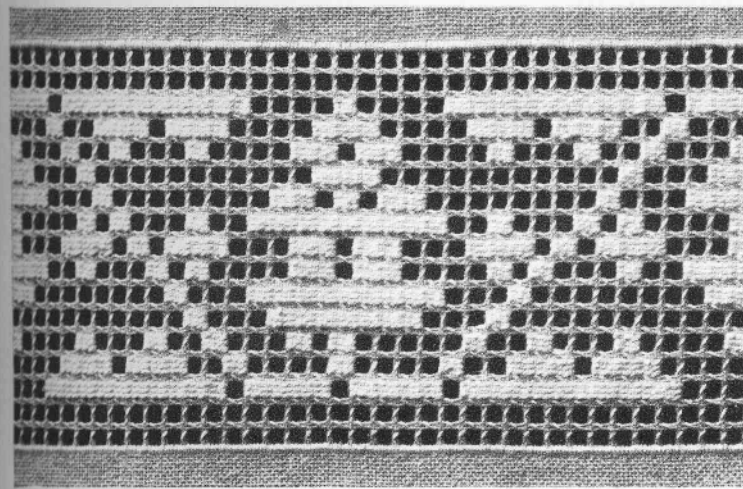


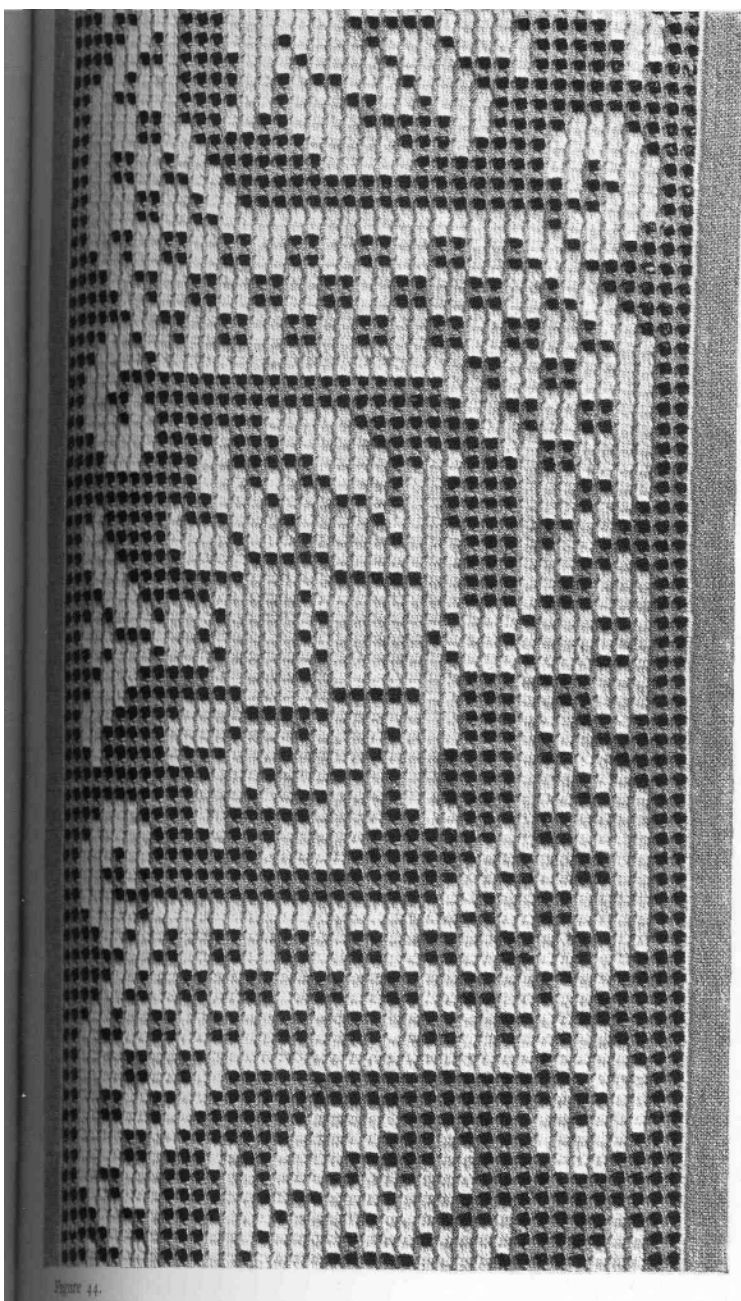
Figure 42.



To make the openwork ground draw out 3 threads of the stuff and leave 3 threads; the border, fig. 41, numbers, in height, 14 little openwork squares, the border, fig. 42, 10 squares and the border fig. 43, 17 squares. Fasten off the edges with corded stitches, in D.M.C Alsatia No. 15, over 3 threads of the stuff. Overcast the clusters, lengthways, with D.M.C Alsatia No. 15; embroider the patterns in darning stitch, in D.M.C pearl Cotton No. 3. All the disengaged clusters are to be overcast vertically with D.M.C Alsatia No. 15.

(\*) The patterns of this plate may also be executed in **embroidery on net** like the figures of plate XVIII.

**Directions for the execution of the patterns on Plate XIV.**  
**Three borders (figs. 44).**



**MATERIALS:** Linen of medium Coarseness; D.M.C pearl Cotton, No. 3 and D.M.C Alsatia, special quality No. 15 in White and in golden yellow.

To make the openwork ground draw out 2 threads of the stuff and leave 4 threads; the border numbers 38 little openwork squares in height. Fasten off the edges with corded stitches, in D.M.C Alsatia No. 15, in white over 3 threads of the stuff. Overcast the clusters, lengthways, with 1 stitch, with D.M.C Alsatia No. 15 in golden yellow 783. Embroider the patterns in darning stitch, in D.M.C pearl Cotton No. 3. All the disengaged clusters are to be overcast vertically with yellow thread.

(\*) The patterns of this plate may also be executed in **embroidery on net** like the figures of plate XVIII.



## Directions for the execution of the patterns on Plate XV (\*). Borders (fig. 45).

MATERIALS: Linen of medium Coarseness; D.M.C Flax thread for knitting and crochet No. 20, in white.

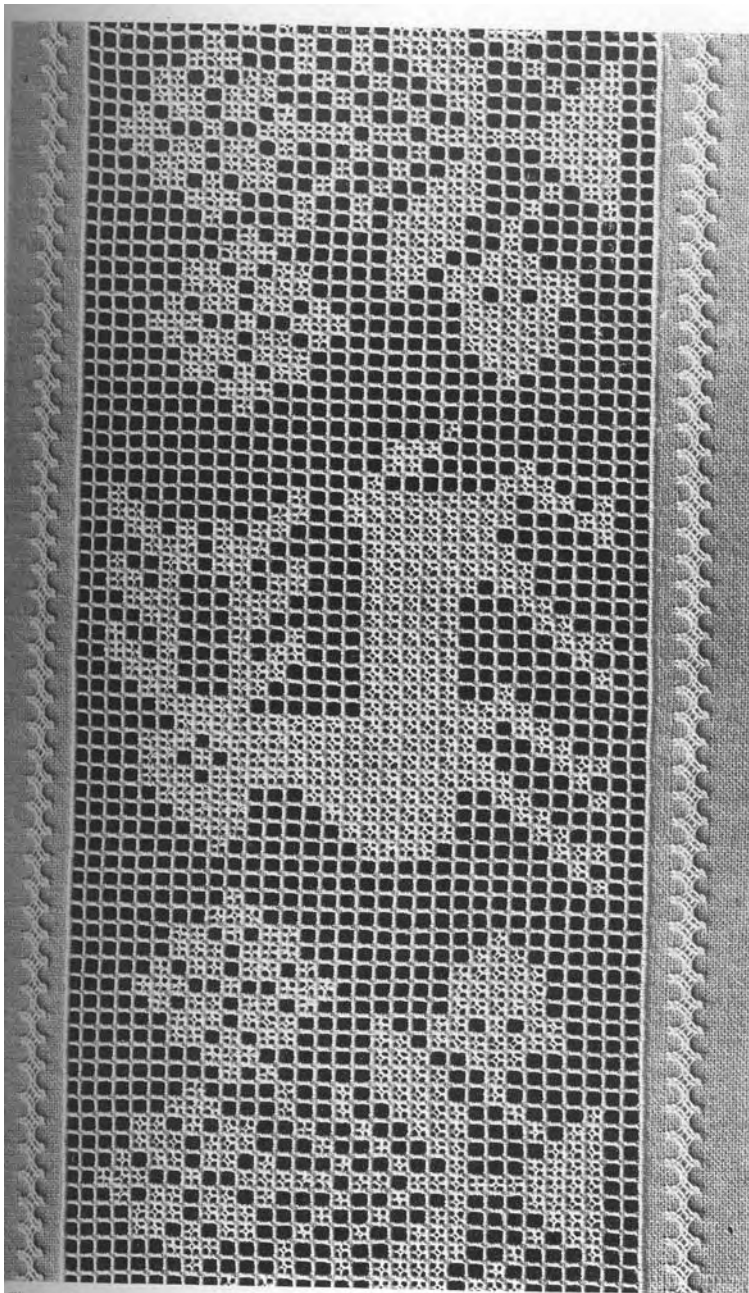


Figure 45.

To make the openwork ground, draw out 3 threads of the stuff and leave 3 threads; the border numbers 31 little openwork squares in height. Fasten off the edges with corded stitches, worked over 3 threads of the stuff. Cord the clusters, lengthways, with 4 stitches, with D.M.C Flax thread for knitting and crochet No. 20; then cord the clusters vertically; embroidering at the same time the patterns in loop stitch; leave 6 threads of the stuff towards the outside and make a row of plaited square stitches over 12 threads of the stuff.

(\*) The patterns of this plate may also be executed in **embroidery on net** like the figures of plate XVIII.

## Directions for the execution of the patterns on Plate XVI (\*).

Three squares (figs. 46, 47 and 48).

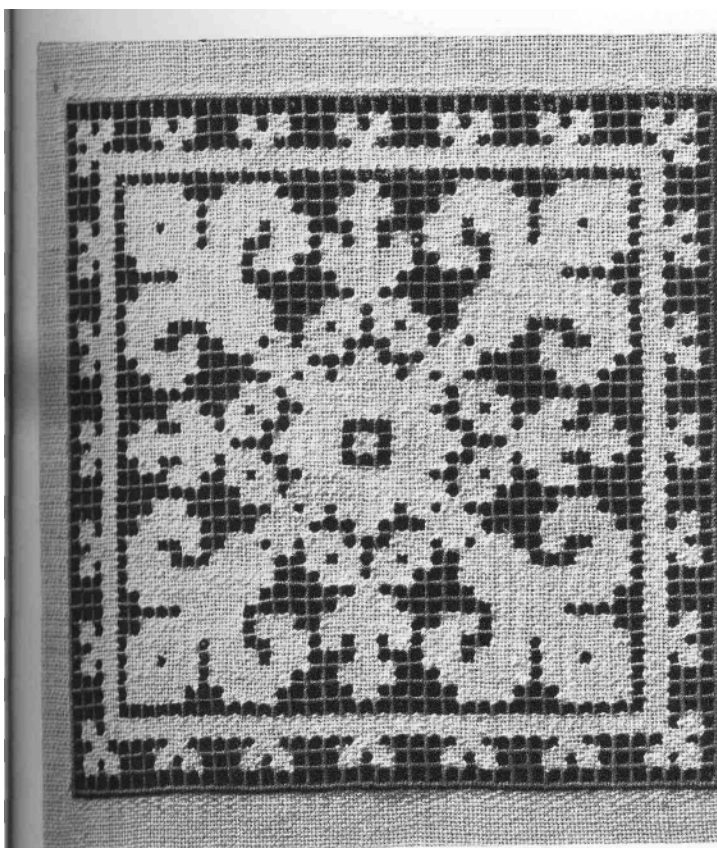


Figure 46.

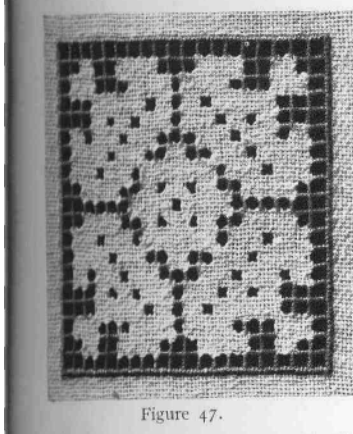


Figure 47.

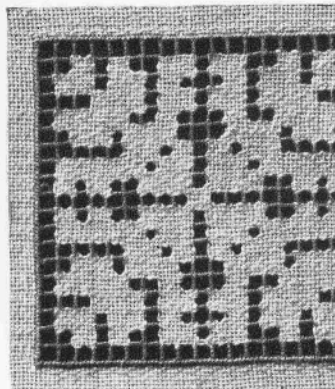


Figure 48.

**MATERIALS:** Linen of medium Coarseness; D.M.C Flax lace thread No. 20 in white, and D.M.C Pearl Cotton No.8, in Cornflower blue 794.

For the big square fig 46, draw out 41 times 2 threads of the stuff both ways, and leave 40 times 2 threads.

For the two little squares, fig 47 and 48, draw out 19 times 2 threads of the stuff, both ways and leave 18 times 2 threads. Fasten off the edges with corded stitches worked over 2 threads of the stuff, with D.M.C Pearl Cotton No.8, in Cornflower blue 794; work the patterns in linen stitch, with D.M.C Flax lace thread No. 20, in white, and cord all the disengaged clusters with D.M.C Pearl Cotton No. 8, in blue.

(\*) The patterns of this plate may also be executed in **embroidery on net** like the figures of plate XVIII.



## Directions for the execution of the patterns on Plate XVII(\*).

Three squares (figs. 49, 50 and 51).

MATERIALS: Linen of medium Coarseness; D.M.C Flax lace thread No. 20 in white, and D.M.C Pearl Cotton No.5, in Locust bean brown 356.

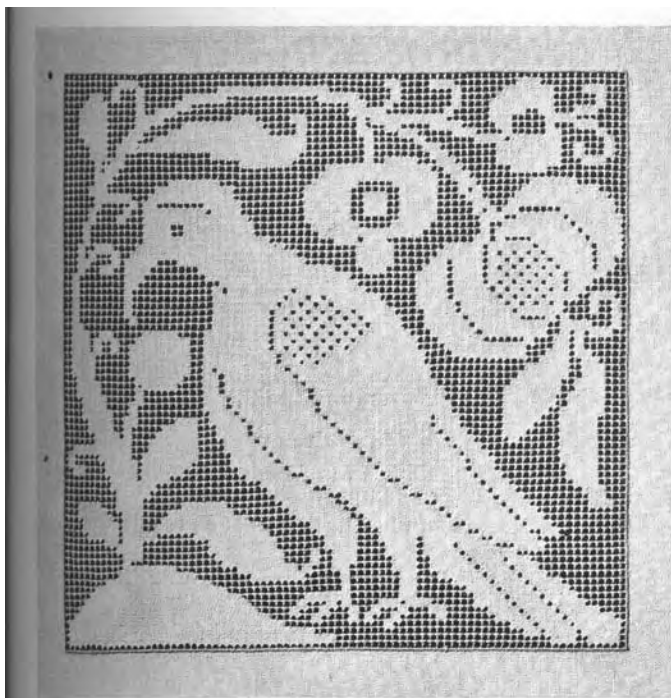


Figure 49.

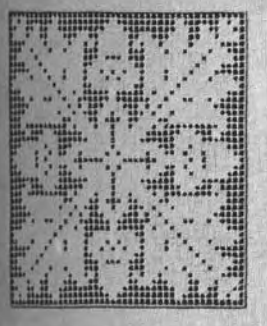


Figure 50.

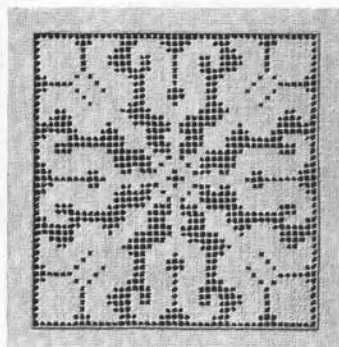


Figure 51.

For the big square fig 49, draw out 81 times 2 threads of the stuff both ways, and leave 80 times 2 threads.

For the two little squares, fig 50 and 51, draw out 43 times 2 threads of the stuff, both ways and leave 42 times 2 threads. Fasten off the edges with corded stitches worked over 2 threads of the stuff, with D.M.C Pearl Cotton No.5, in locust bean brown 356; work the patterns in linen stitch, with D.M.C Flax lace thread No. 20, in white, and overcast all the disengaged clusters with D.M.C Pearl Cotton No.5, in locust bean brown 356.

(\*) The patterns of this plate may also be executed in **embroidery on net** like the figures of plate XVIII.

# **Directions for the execution of the patterns on Plate XVIII** **Three squares (figs. 52, 53 and 54).**

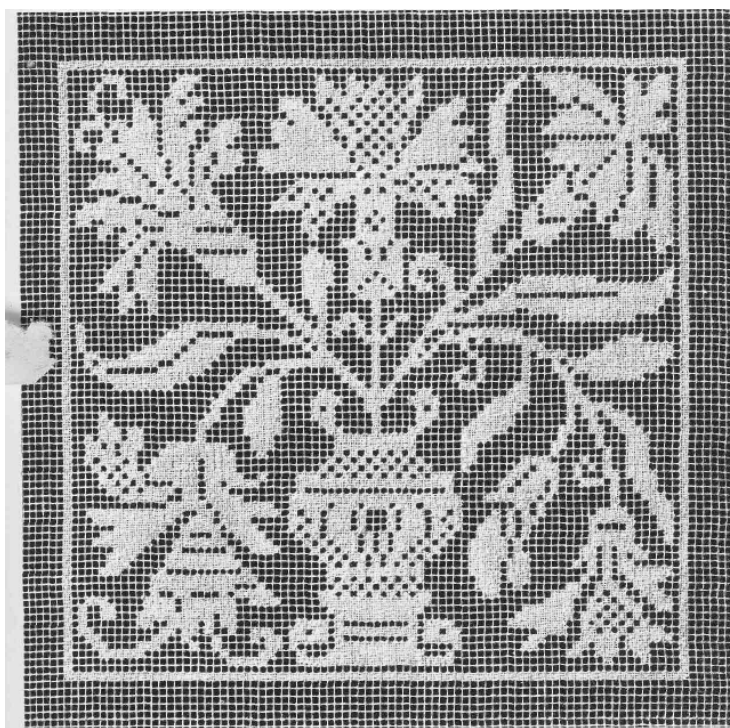


Figure 52.

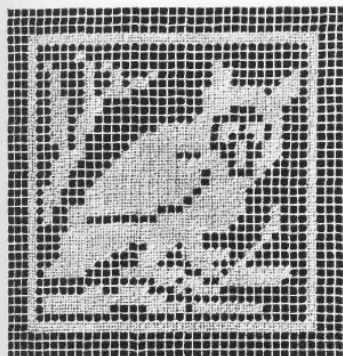


Figure 53.

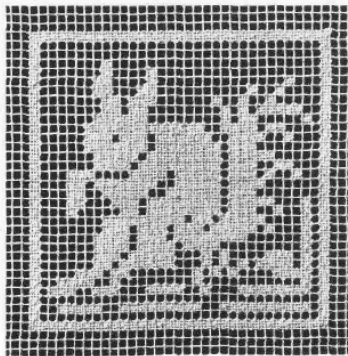


Figure 54.

**MATERIALS:** Net canvas; D.M.C Flax lace thread No. 20, in white.

This plate, the patterns of which are of the same character as those of plates XVII, XIX, XX, XXI, XXII, XXIII, is executed in linen stitch on a net ground with D.M.C Flax lace thread No. 20. We show in plate XVIII how the patterns of openwork with lattice-ground can also be executed in **embroidery on net**. On the other hand the work in embroidered net can serve as patterns for openwork with lattice-ground.

We refer our readers to our album "Embroidery on Net" which contains a series of squares, borders and grounds suitable as patterns for **openwork on linen**.



## Directions for the execution of the patterns on Plate XIX (\*).

Three squares (figs. 55, 56 and 57).

MATERIALS: Linen of medium Coarseness; D.M.C Alsatia No. 15, and D.M.C Crochet Cotton special quality No. 10 in white or in cream.

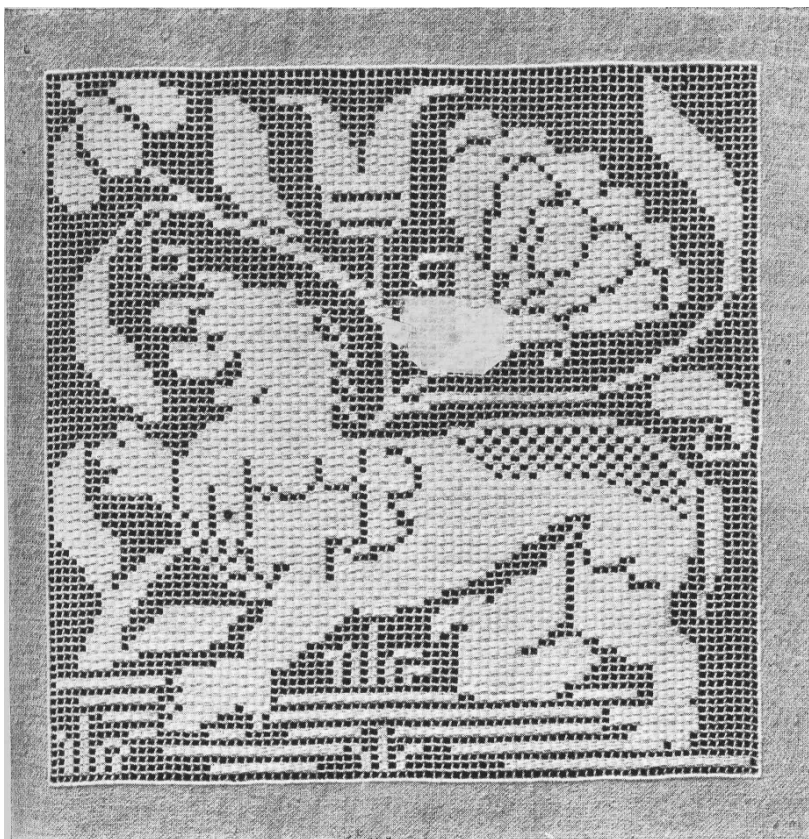
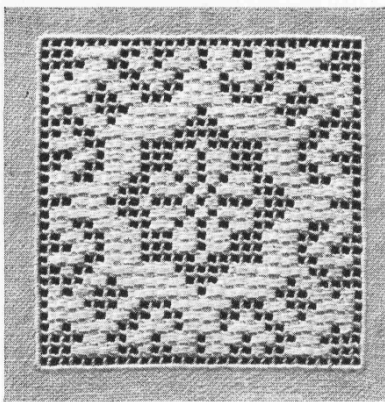
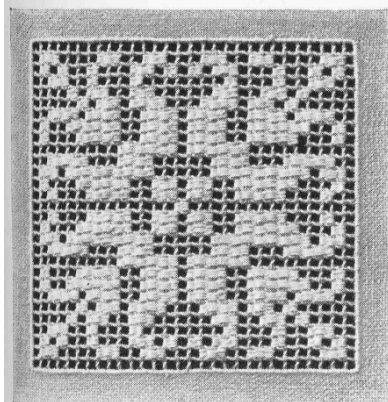


Figure 55.



For the big square fig 55, draw out 81 times 2 threads of the stuff both ways, and leave 80 times 2 threads.

For the two little squares, fig 56 and 57, draw out 29 times 2 threads of the stuff, both ways and leave 28 times 2 threads. Fasten off the edges with corded stitches worked over 2 threads of the stuff, with D.M.C Alsatia No. 15, overcast with one stitch all the horizontal clusters with D.M.C Crochet Cotton special quality No. 10, execute the motives in darning stitch, with D.M.C Alsatia No. 15, and overcast all the disengaged vertical clusters with D.M.C Crochet Cotton special quality No. 10.

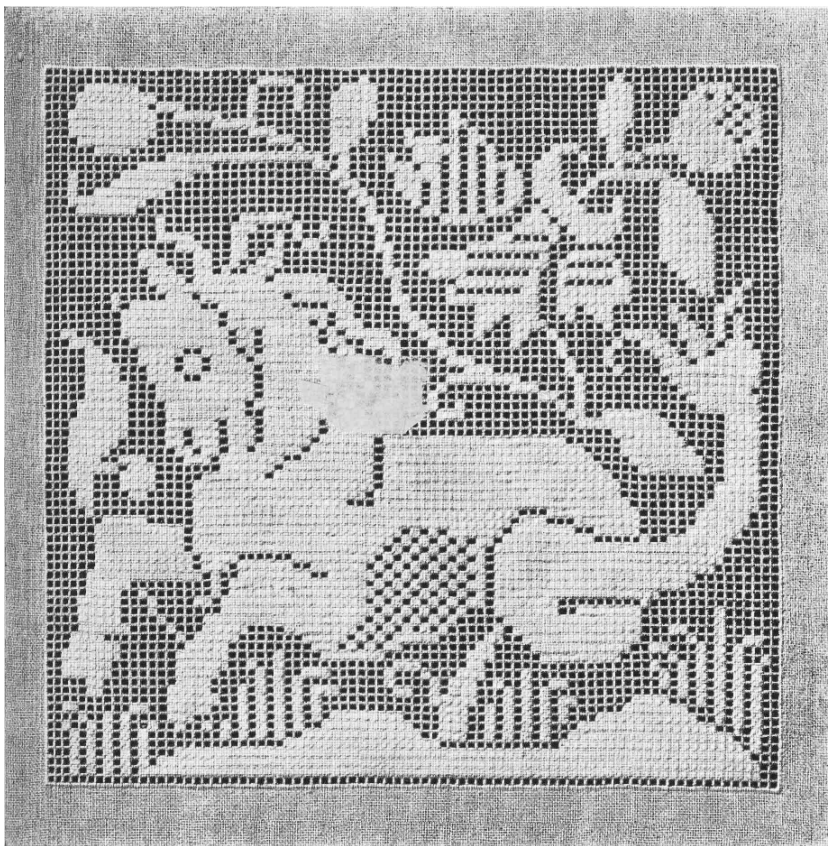
(\*) The patterns of this plate may also be executed in **embroidery on net** like the figures of plate XVIII.



## Directions for the execution of the patterns on Plate XX (\*).

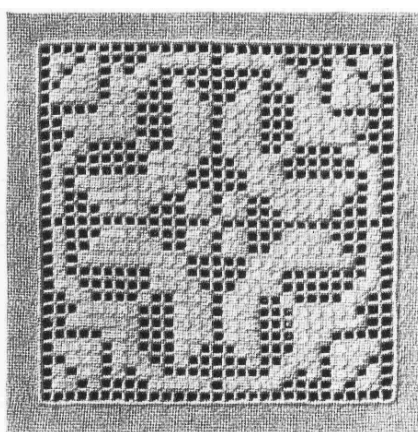
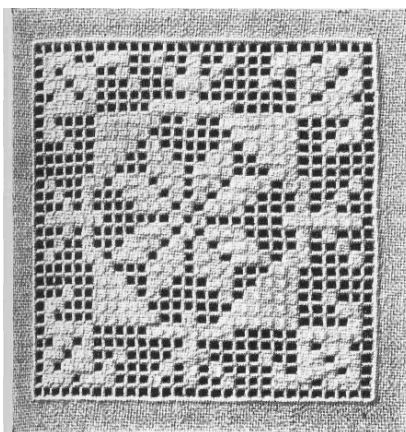
Three squares (figs. 58, 59 and 60).

MATERIALS: Linen of medium Coarseness; D.M.C Pearl cotton No. 5, and D.M.C Crochet Cotton 6 cord No. 20 in white or in Ecrú.



For the big square fig 58, draw out 81 times 2 threads of the stuff both ways, and leave 80 times 2 threads.

For the two little, squares, fig 59 and 60, draw out 29 times 2 threads of the stuff, both ways and leave 28 times 2 threads. Fasten off the edges with corded stitches worked over 2 threads of the stuff, with D.M.C Pearl cotton No. 5, Transform all the horizontal clusters into corded bars with D.M.C Crochet Cotton 6 cord, No. 20, execute the motives in darning stitch, with D.M.C Pearl cotton No. 5, and cord all the disengaged vertical clusters with D.M.C Crochet Cotton 6 cord, No. 20.



(\*) The patterns of this plate may also be executed in **embroidery on net** like the figures of plate XVIII.



## Directions for the execution of the patterns on Plate XXI (\*).

Three squares (figs. 61, 62 and 63).

MATERIALS: Fine linen; D.M.C Alsatia No. 40, and D.M.C Crochet Cotton special quality No. 40 in white or in Ecreu.

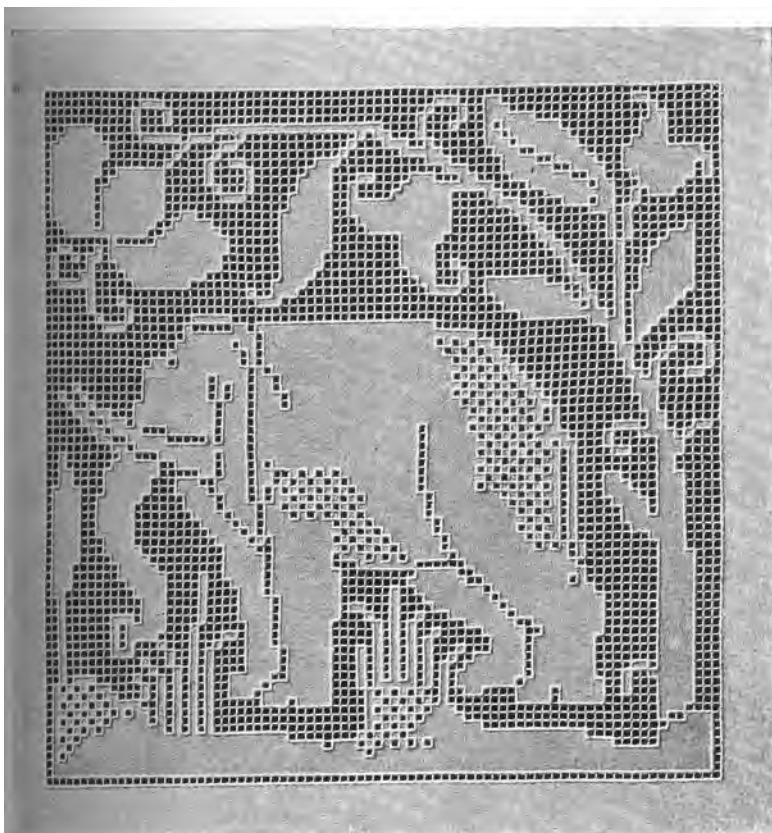


Figure 61.

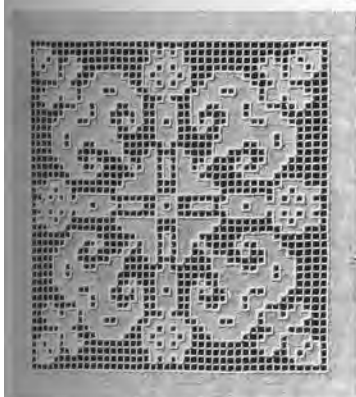


Figure 62.

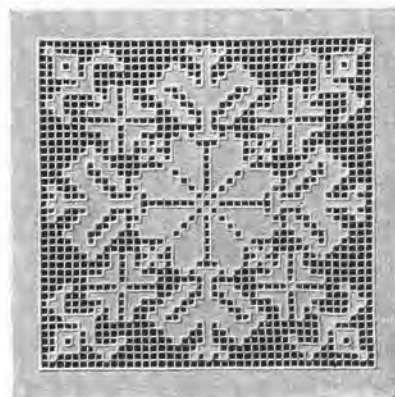


Figure 63.

Trace the outlines of the motives reserved in the linen with backstitches, counting 4 threads of the stuff for each little openwork square and 4 threads for each cluster. Embroider the outlines with corded stitches over 4 threads of the stuff, with D.M.C Alsatia No. 40. Transform the ground into a net by drawing out and leaving 4 threads of the stuff; the clusters are corded with 3 or 4 stitches in horizontal and vertical rows, with D.M.C Crochet Cotton special quality No. 40.

(\*) The patterns of this plate may also be executed in **embroidery on net** like the figures of plate XVIII.

### Directions for the execution of the patterns on Plate XXII (\*).

Three squares (figs. 64, 65 and 66).

MATERIALS: Fine linen; D.M.C Embroidery cotton, special quality Nos. 16 and 25 in white.

Trace the outlines of the motives reserved in the linen with backstitches, counting 4 threads of the stuff for each little openwork square and 4 threads for each cluster. Embroider the clusters with corded stitches over 4 threads of the stuff, with D.M.C Embroidery cotton, special quality No.25. Transform the ground into a net by drawing out and leaving 4 threads of the stuff; the clusters are overcast with 1 stitch in horizontal and vertical rows, with D.M.C Embroidery cotton, special quality No.16.

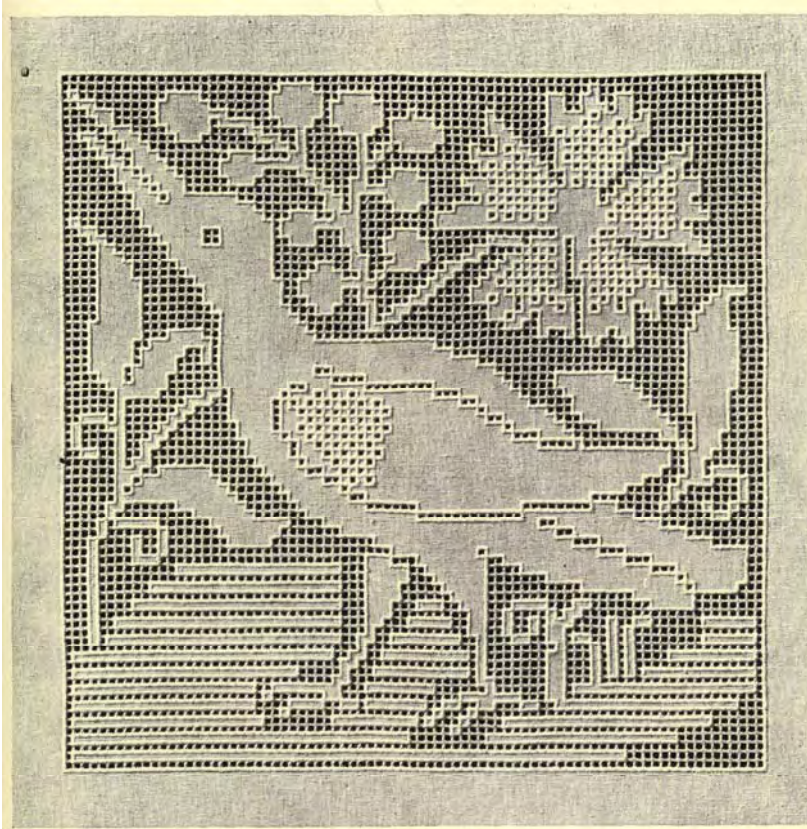


Figure 64.



Figure 65.

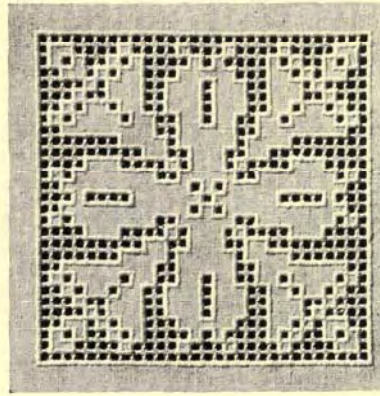


Figure 66.

(\*) The patterns of this plate may also be executed in **embroidery on net** like the figures of plate XVIII.

### Directions for the execution of the patterns on Plate XX (\*).



### Three squares (figs. 67, 68 and 69).

MATERIALS: Linen of medium Coarseness; D.M.C Floss Flax or flourishing thread No. 8, and D.M.C Flax lace thread No. 20 in white.

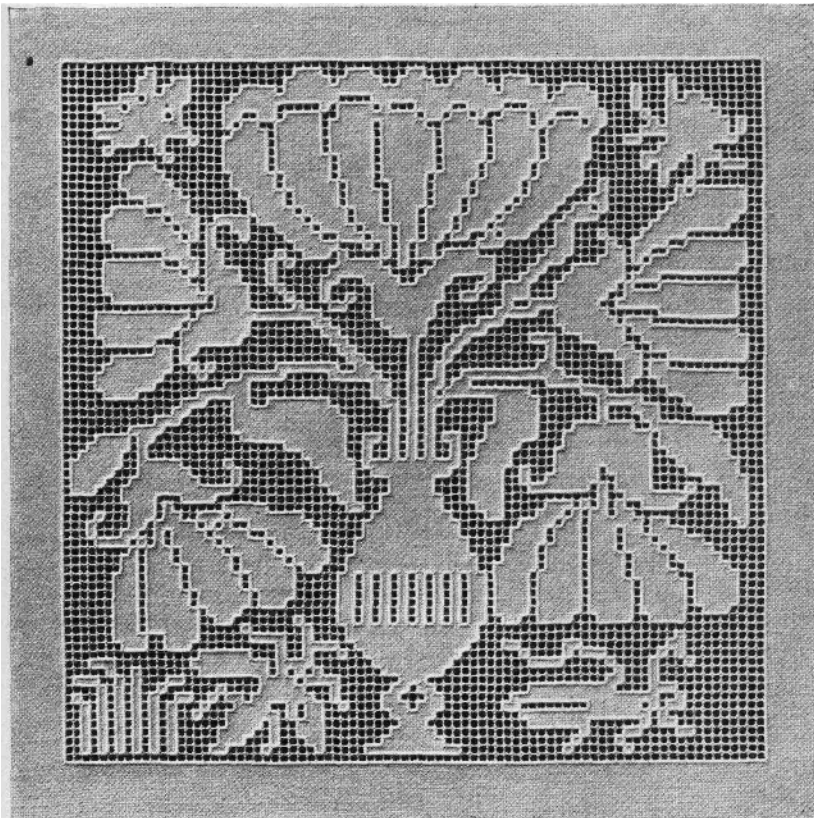


Figure 67.

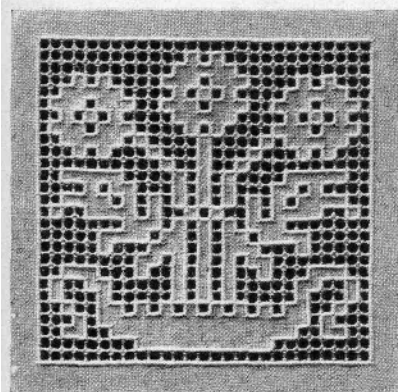


Figure 68.

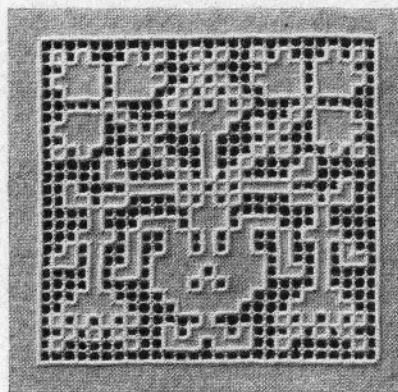


Figure 69.

Trace the outlines of the motives reserved in the linen with backstitches, counting 3 threads of the stuff for each little openwork square and 3 threads for each cluster. Embroider the outlines with corded stitches over 3 threads of the stuff, with D.M.C Floss Flax or flourishing thread No. 8. Transform the ground into a net by drawing out and leaving 3 threads of the stuff; the little squares of stuff in the net are to be framed with four-sided openwork stitches, in D.M.C Flax lace thread No. 20.

(\*) The patterns of this plate may also be executed in **embroidery on net** like the figures of plate XVIII.



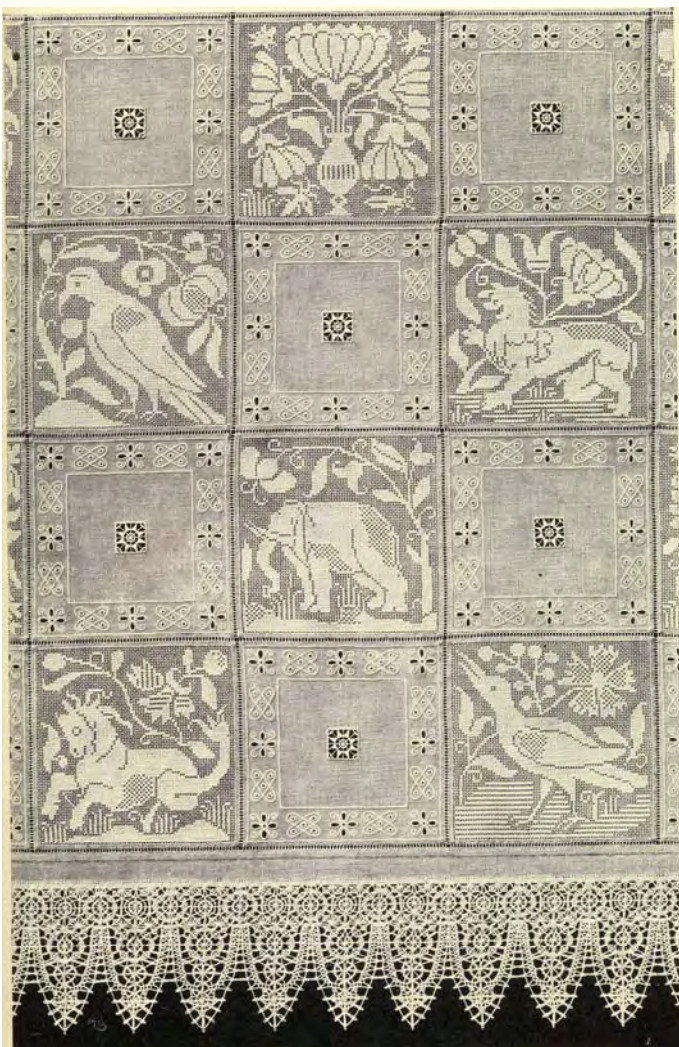
## Directions for the execution of the patterns on Plate XXIV.

**Alter cloth** (see figs. 49, 52, 55, 58, 61, 64 and 67).

**MATERIALS:** Fine linen; for the openwork squares and the Reticella squares: D.M.C Alsatia No. 40 and D.M.C Crochet Cotton, 6 cord No. 50;

for the squares in English embroidery: D.M.C Embroidery Cotton special quality No. 25;

for the pillow lace D.M.C Flax lace thread No. 20.



This piece of work is a partial copy of an altar-cloth, dating from the XVIth century, in the museum of Industrial art in Dresden; it may be executed, either like the original, where the square composed of flowers and animals are **embroidered on net**, see fig 52, plate XVIII, which will make the execution easier and quicker, or in **openwork on linen**, that is same way as the piece of work reproduced on plate XXIV. The squares of linen, between the openwork squares, are ornamented with little motives in English embroidery, with Reticella square inserted in the center. The cloth is edged with wide pillow lace, in the old Italian style; patterns of other pillow laces, easier to make will be found in our album entitled "Pillow Laces", Ist series.

For the squares with animals and flowers, in **embroidered on net**, as in the original, use for the net ground

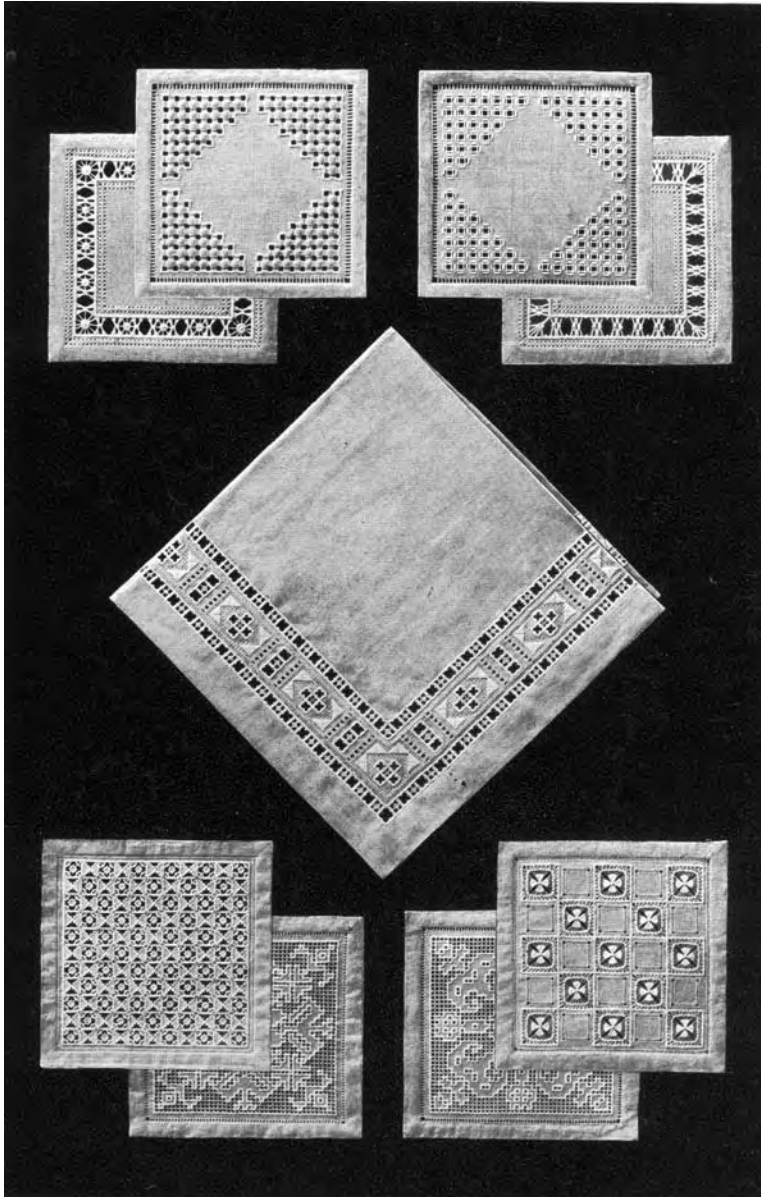
and for the embroidery in linen stitch, D.M.C Flax lace thread No. 20. If the net ground be made by hand, make the squares of 85 meshes; in this way you will have a mesh net free outside the frame in linen stitch. If you use woven net, leave a mesh free outside the frame and the edges of the woven net should then be strengthened by a narrow hem, the stitches of which should be hidden in the embroidery.



## Directions for the execution of the patterns on Plate XXV.

**Four dessert D'oyleys** (see figs. 13, 14, 35 and 36).

**MATERIALS:** Linen of medium Coarseness; D.M.C Pearl Cotton No. 5, and D.M.C Crochet Cotton, 6 cord No. 10 in white or in Ecu.



Two dessert d'oyleys are to be ornamented with rows of openwork, see figs. 13 and 14, and two are to be ornamented with corners formed by grounds, figs 35 and 36. Finish off the edges of the linen with an openwork hem about 18 millimeters wide.

**Small table cloth** (see fig. 29).

**MATERIALS:** Linen of medium Coarseness; D.M.C Pearl Cotton No. 5, and D.M.C Crochet Cotton, special quality Nos. 5 and 10 in white or in Cream.

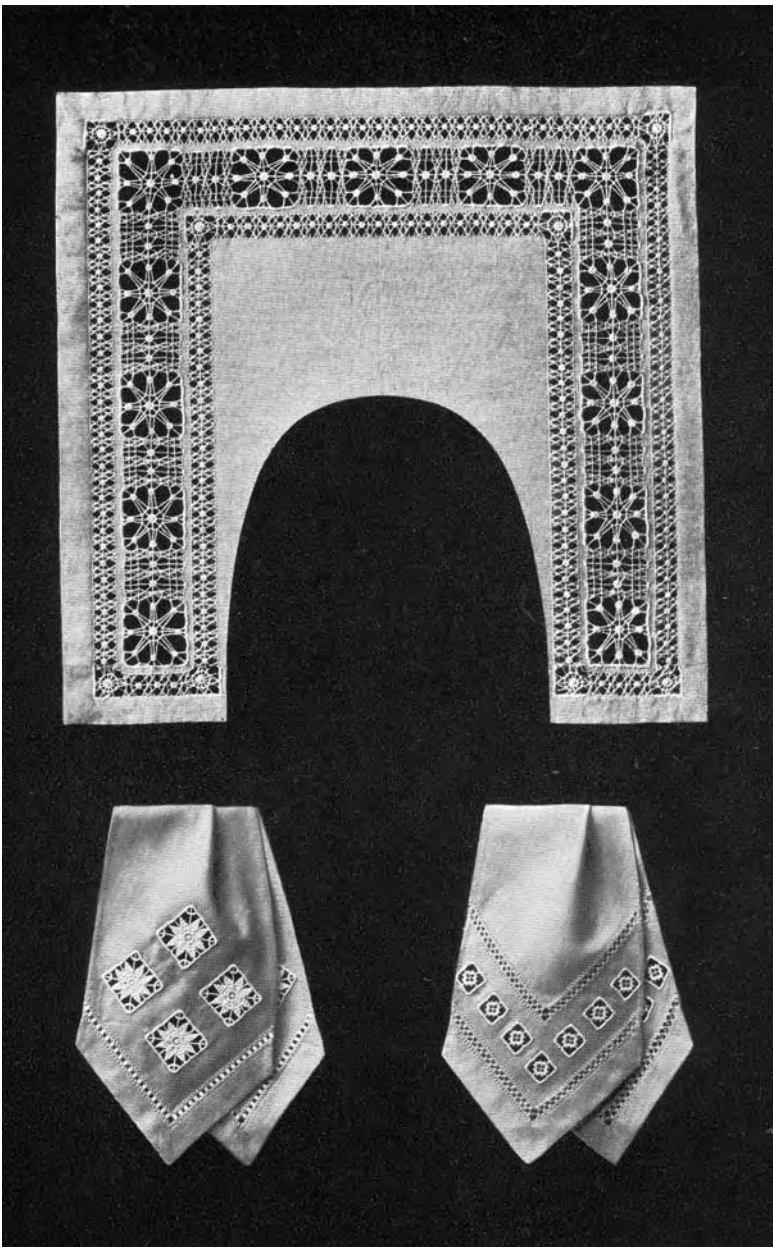
Ornament the little cloth with a border of cut stitch work, fig 29, and finish off the edges of the linen with a hem about 45 millimeters wide.

**Four dessert D'oyleys** (see figs. 21, 39, 62 and 63).

**MATERIALS:** Fine linen; D.M.C Crochet Cotton, 6 cord Nos. 50 and 80, D.M.C Crochet Cotton special quality No. 40, and D.M.C Alsatia No. 25 and 40, and in white or in Ecu.

Make two of these dessert d'oyleys of squares, figs. 62 and 63, and the other two of grounds, figs 21 and 39. Finish off the edges of the linen with an openwork hem about 18 millimeters wide.

**Directions for the execution of the patterns on Plate XXVI.**  
**Lady's Collar** (see fig. 23).



**MATERIALS:** Fine linen;  
D.M.C Flax thread, Nos.  
20 and 35, in white or in  
Cream.

The edge  
of the collar is to be  
worked according to the  
directions given for Fig.  
23 of plate V; observe  
that the clusters, to be  
knotted with D.M.C  
Flax thread, No. 35 are  
to number 4 threads of  
the stuff. The  
embroidery of the collar  
is to be done with  
D.M.C Flax thread, No.  
20.

**Two scarves for ladies**  
(see figs. 20, 25, 26 and  
27).

**MATERIALS:** Fine  
undressed, washing linen;  
D.M.C Alsatia, No. 30 and  
35, D.M.C Crochet Cotton,  
special quality Nos. 10, 20  
and 50, in white or in  
Cream.

The two scarves  
consist of a band of  
stuff, cut on the cross,  
17 centimeters wide and

1 meter 50 centimeters long.

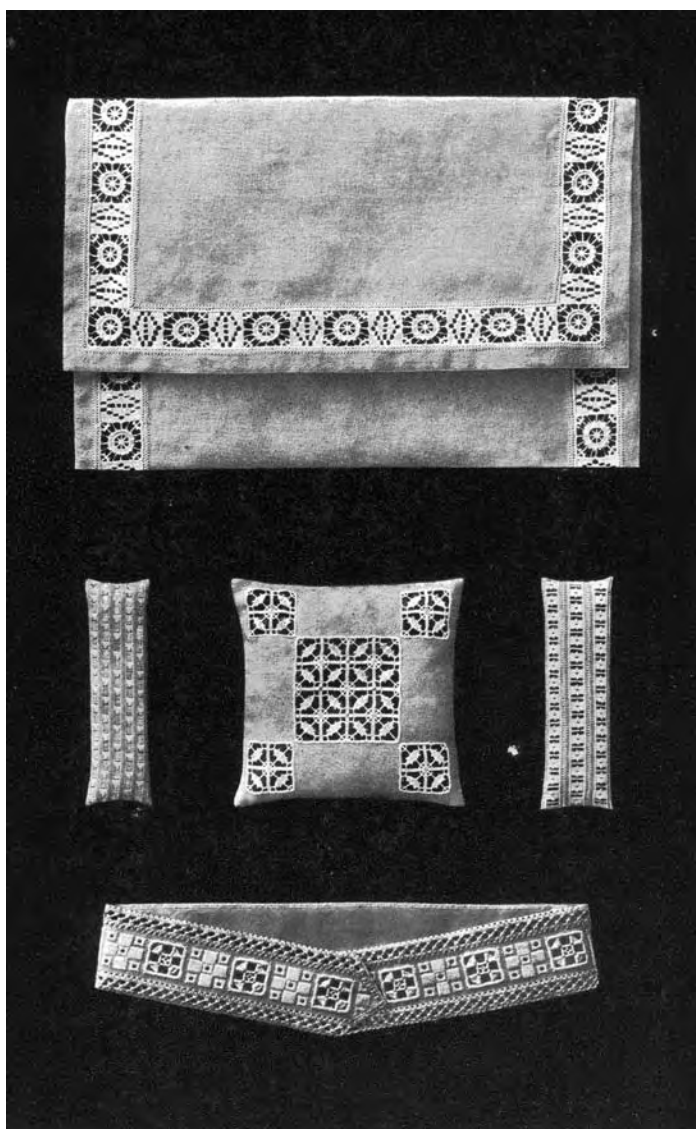
Ornament the ends of the scarves with the openwork motives. The left scarf is embroidered with the little row of openwork used in fig. 26. The four motives in the stuff are executed in the same way as the stars in the border, fig. 27. The right scarf is ornamented with two small rows of openwork, similar to the openwork row of the border, fig 25; between these two rows, work 7 squares in the stuff, to be executed in the same way as those of the row of openwork, fig.20.



## Directions for the execution of the patterns on Plate XXVII.

### Night-dress bag (see fig. 28).

**MATERIALS:** Linen of medium Coarseness; D.M.C Alsatia No.15, and D.M.C Crochet Cotton, special quality Nos. 10,20 and 30 in white or in Cream.



The bag is to be made of a strip of stuff, 50, centimeters wide and 90 centimeters long, 66 centimeters of which are to be taken for the bag and 24 for the fold-over. The border fig. 28, is to be worked along the two long sides, as well as along the wide side of the fold-over, according to the explanations given for plate VII.

### Two oblong pincushions and one square one (see figs. 12, 34 and 40).

**MATERIALS:** Linen of medium Coarseness; D.M.C Pearl Cotton Nos.5 and 8, and D.M.C Crochet Cotton, special quality Nos. 10, in white or in Cream.

The tops of the oblong pincushions measure 24 centimeters in length and 8 in width. Ornament the left pincushion with the ground, fig. 34, and the right one with a ground composed of the openwork bands of fig. 12. The top of the square pincushion measures 24 centimeters and is ornamented with one big and 4

little open squares. The big square consists of 4 openwork motives, executed after the ground, fig. 40; the little squares placed at the corners consist of one openwork motive. The three pincushions are made of flannel stuffed with horsehair.

### Lady's waist-belt (see fig. 25).

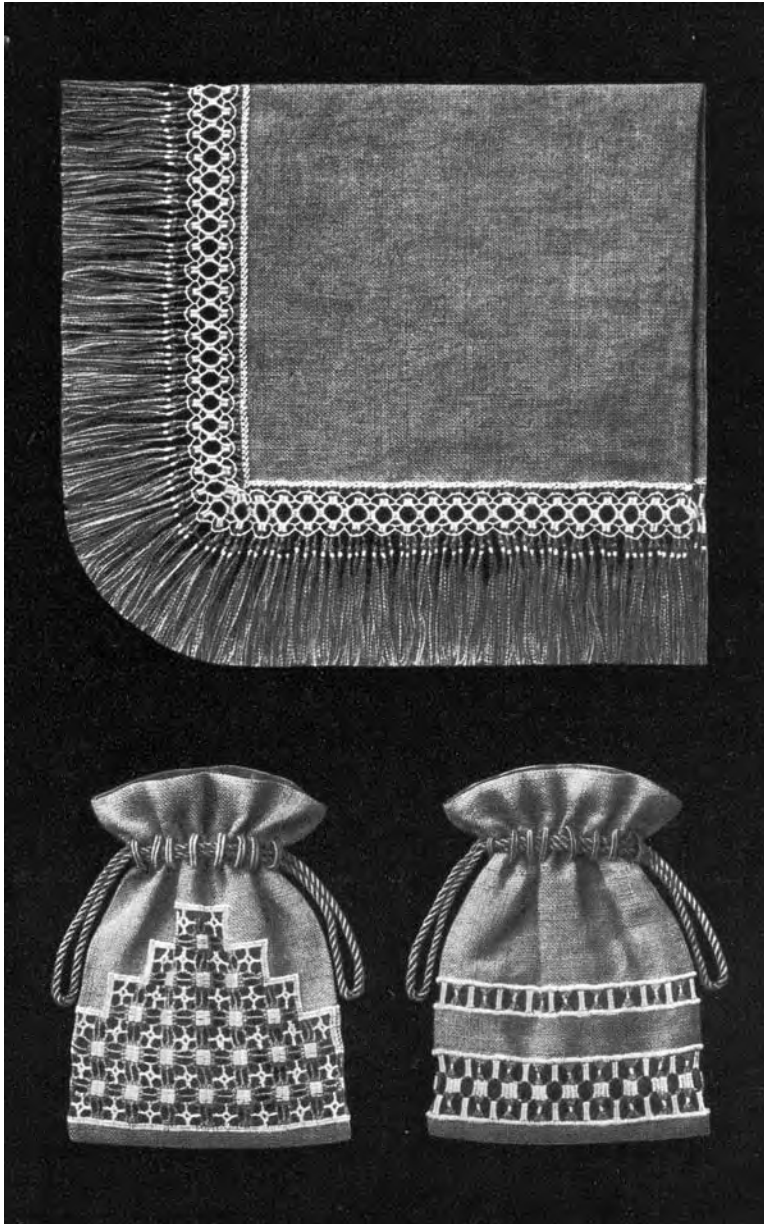
**MATERIALS:** Linen of medium Coarseness; D.M.C Pearl Cotton Nos.5, and D.M.C Crochet Cotton, special quality Nos. 10, in white or in Cream.

The belt is formed by embroidery, fig. 25, which is to be executed after the directions to plate VI. Line the belt with a coloured ribbon.

## Directions for the execution of the patterns on Plate XXVIII.

### Table -cover (see fig. 74).

MATERIALS: Coarse linen, in dark brown; D.M.C Pearl Cotton No.3, in wood grey 804.



Inside, the table-cover measures 82 centimeters in length and 75 in width. – An openwork border with fringe, executed after fig. 74, surrounds the table-cover. The corners of the border are formed by adding at each angle 4 meshes, each consisting of 6 threads of the stuff. You can continue the embroidery above these meshes without interruption.

### Two reticules (see figs. 71 and 73).

MATERIALS: Coarse linen, in old gold; D.M.C Pearl Cotton No.3, in cream yellow 579 and golden yellow 783.

The reticules are 32 centimeters long and 24 centimeters wide. – The left reticule is ornamented with a scalloped motive to be executed after the explanations given for the border, fig. 73. Line the reticule with dark red stuff; a double cord run through little bars made of darning

stitch forms the top of the reticule. The right reticule is ornamented at the bottom with a wide border to be executed after the directions for fig. 71. At the top leave an edge of linen, 20 threads of the stuff wide, then embroider the narrow border for which you draw out 10 threads of the stuff. Line the reticule with a light blue material; a double cord drawn through a runner forms the top of the bag.



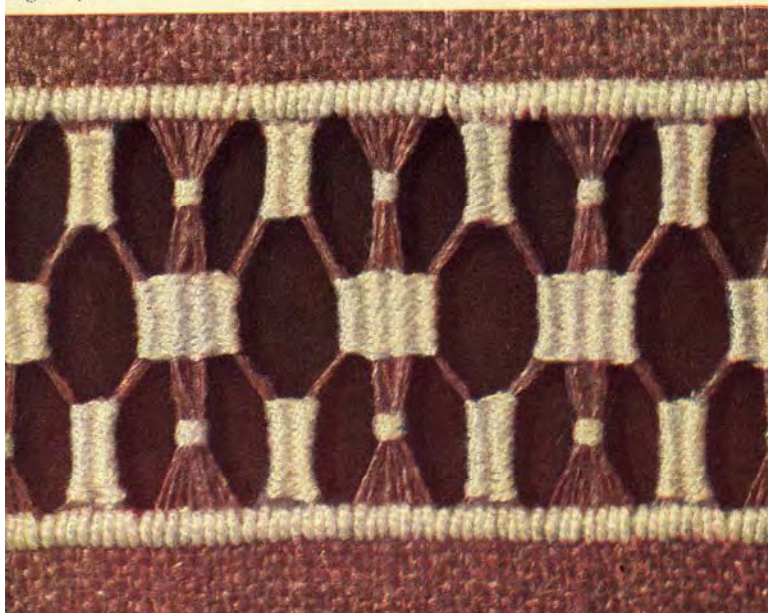
## Directions for the execution of the patterns on Plate XXIX(\*).

Two borders (figs. 70 and 71).

MATERIALS: Coarse linen D.M.C pearl Cotton, No. 3 in wood grey 804.



Figure 70.



For the border fig. 70, draw out 32 horizontal threads of the stuff and secure the edges with vertical flat stitches, made over 3 threads of the stuff. Embroider the motives in darning stitch over clusters of 5 threads.

For the border fig. 71, draw out 28 horizontal threads of the stuff and secure the edges with vertical flat stitches, made over 3 threads of the stuff. Embroider the motives in darning stitch and corded over clusters of 4 threads.

(\*)

Complementary directions for the execution of the patterns of this plate will be found in our Ist Series "Drawn Thread Work", fig. 35, 37 and 38.

**Directions for the execution of the patterns on Plate XXX(\*).  
Border with a corner (fig. 72).**

MATERIALS: Coarse linen D.M.C pearl Cotton, No. 3 in Smoke grey 822.



Em  
broider the  
scalloped edges  
over 10 threads of  
the stuff. For the  
rows of openwork  
draw out 24  
horizontal threads  
of the stuff. The  
bars that fill the  
corner are to be  
made with threads  
of the stuff; make  
the darning stitch  
and the corded  
stitch, in openwork  
row, with D.M.C  
pearl Cotton, No. 3  
in Smoke grey  
822.

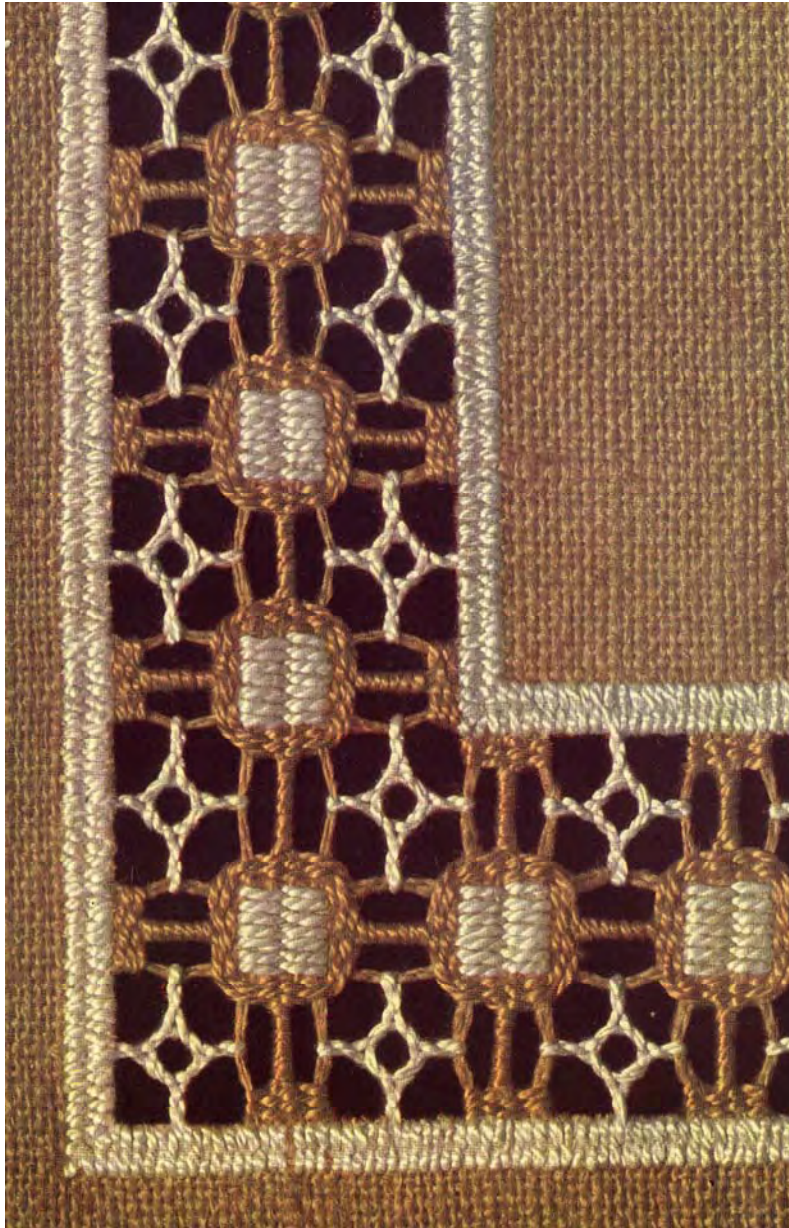
(\*)  
Complementary  
directions for the  
execution of the  
patterns of this  
plate will be found  
in our Ist Series  
“Drawn Thread  
Work”, fig. 36 and  
37.



## Directions for the execution of the patterns on Plate XXXI.

### Border with a corner (fig. 73).

MATERIALS: Coarse linen D.M.C pearl Cotton, No. 3 in Golden yellow 783 and Corn yellow 712.



For the insertion draw out alternately, 11 horizontal and 11 vertical threads of the stuff and leave 8 threads. Embroider the edges in flat stitch set contrariwise, over 4 threads of the stuff in D.M.C pearl Cotton, No. 3 in Corn yellow 712; embroider the light squares of the insertion over 8 threads of the stuff; surround the embroidered squares with 4 rows of darning stitch, with D.M.C pearl Cotton, No. 3 in Golden yellow 783, make corded bars in the four directions, worked over the 3<sup>rd</sup>, 4<sup>th</sup>, 5<sup>th</sup> and 6<sup>th</sup> of the 8 disengaged threads and then make 4 rows of darning stitches along the light edges. In the empty spaces, with the light thread,

make loop stitches set vertically, which are reinforced by overcasting stitches.

## Directions for the execution of the patterns on Plate XXXII (\*).

### Border with fringe (fig. 74).

MATERIALS: Coarse linen D.M.C pearl Cotton, No. 3 in Saffron yellow 748.

Embroider the edge with plaited stitch, over 2 threads of the stuff. Make



the insertion by drawing out 30 horizontal threads of the stuff. Embroider the motives with D.M.C pearl Cotton, No. 3 in Saffron yellow 748. Make the fringe by drawing out as many threads at the bottom of the border as will give the fringe a depth of 20 centimeters. The disengaged threads are to be knotted so that each motive of the pattern has below it three meshes or clusters of threads; increase these clusters by a few threads drawn out of the stuff and tie up the clusters thus thickened with light thread.

(\*)

Complementary directions for the execution of the patterns of this plate will be found in our

Ist Series "Drawn Thread Work", fig. 22 to 24, 35 and 37.