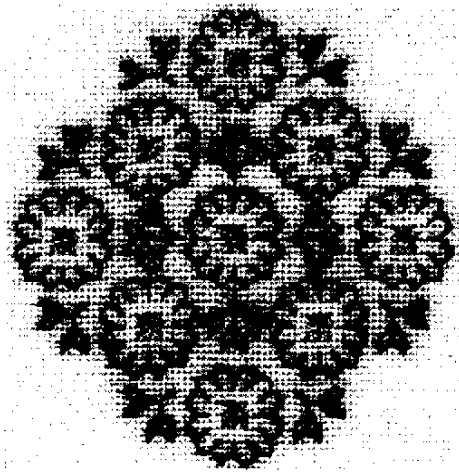


VICTORIAN POSY BLACKWORK^{©1996}

A Design by Patricia Wainwright for Rainbow Gallery



Finished Size: 2½" x 2½"

MATERIALS

6" x 6"—#28 Jobelin (White); Bars to fit; #24 Tapestry needles

1 card of each of the following:

Splendor® S801-Black

Nordic Gold® ND1-Pale Gold

Splendor is made with three bundles of four plies each. To separate into individual plies for stitching, pull out one bundle at a time and ply it.

Note: Each square equals 2 threads.

1. Main Detail—Long Stitch and Back Stitch using a single ply of S801.
2. Center Detail—Straight stitch forming Smyrna Cross using a single strand of ND1. See Diagram #1 for count.

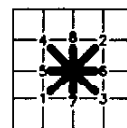
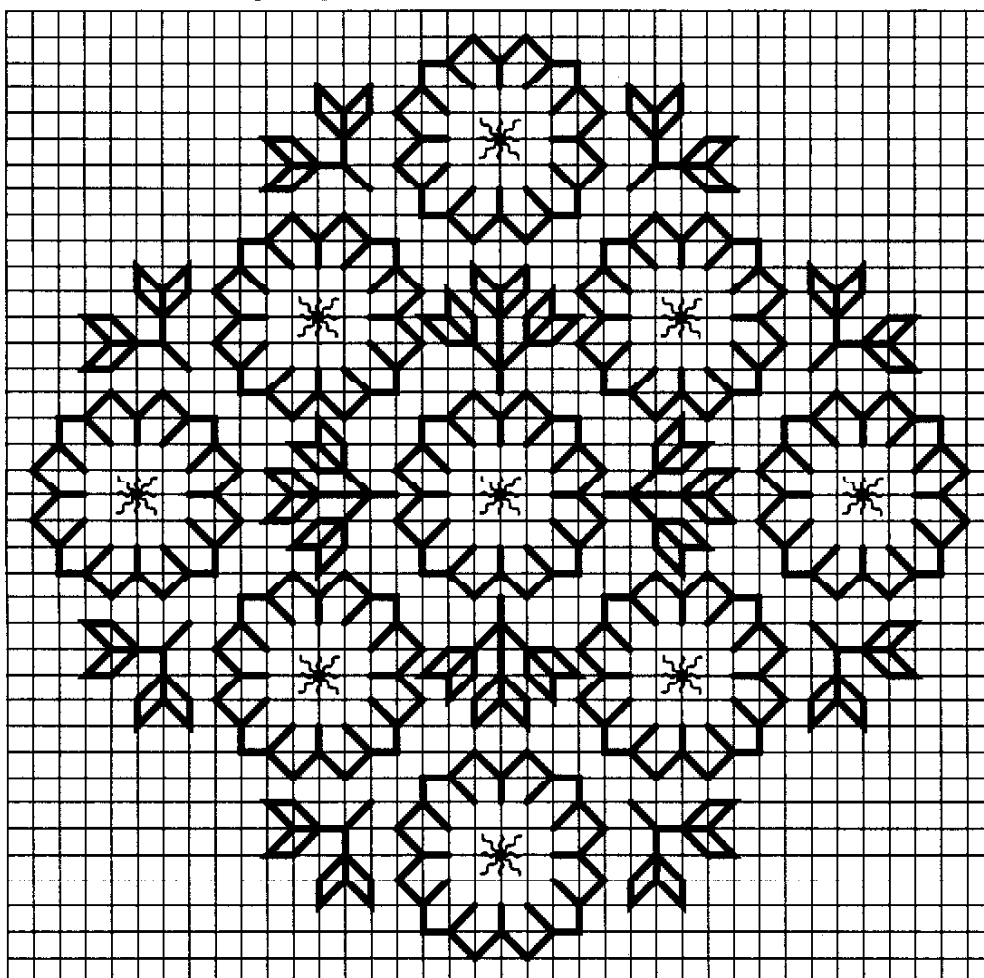


Diagram #1



S801
ND1

Photocopying of this design is invited.

Rainbow Gallery

7412 Fulton Ave., #5, North Hollywood, CA 91605

Further Blackwork designs and books by the same designer
are available from:

Skinner Sisters

P.O. Box 41786 • Los Angeles, CA 90041

Tel: (213) 874-5136 • Fax: (213) 874-0671

Production by Lightworks