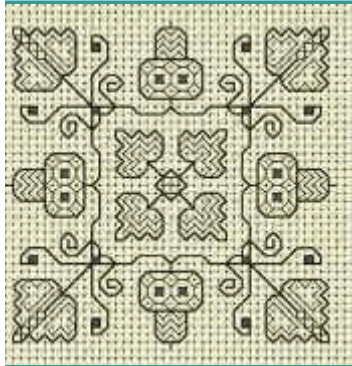


Tom Pudding Designs

Here's your free chart for October 2000 from Tom Pudding Designs - a pretty blackwork design with a stitch count of 42w x 42h. Click on the picture to see a larger image, then use your browser's back button to return here.

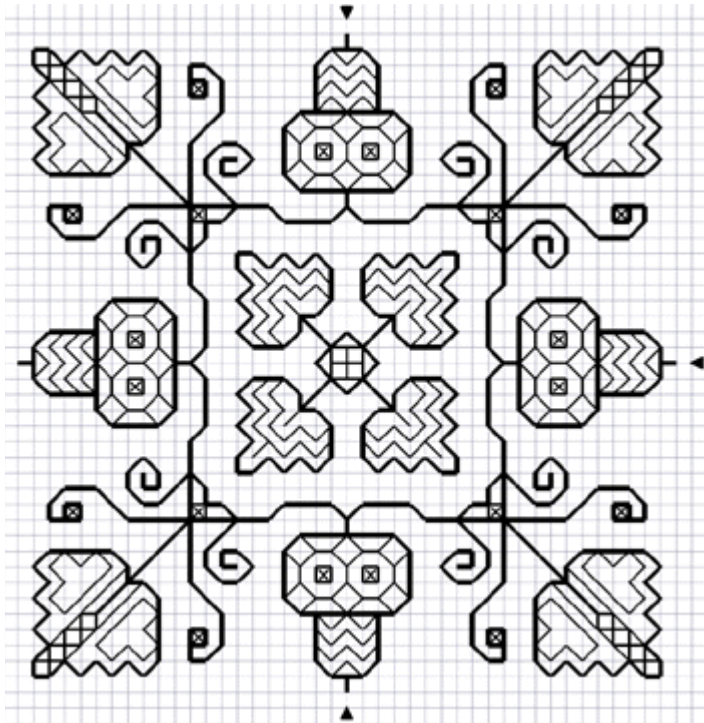


✕ DMC 3799 very dark pewter grey

back stitch:

— DMC 3799 very dark pewter grey

use two strands for heavy lines,
one strand for fine lines and cross stitch



The autumn blackwork chart was created by Jan Eaton. The design remains her property and is protected by copyright laws. You may print one copy of the chart from the Tom Pudding Designs website for your own personal use. You may not copy, scan or reproduce the chart or any part of the chart in any printed or electronic form without her written permission and you also may not use the design in any form for financial gain or as a kit component or teaching aid.

Autumn blackwork design © Jan Eaton 2000. All Rights Reserved.