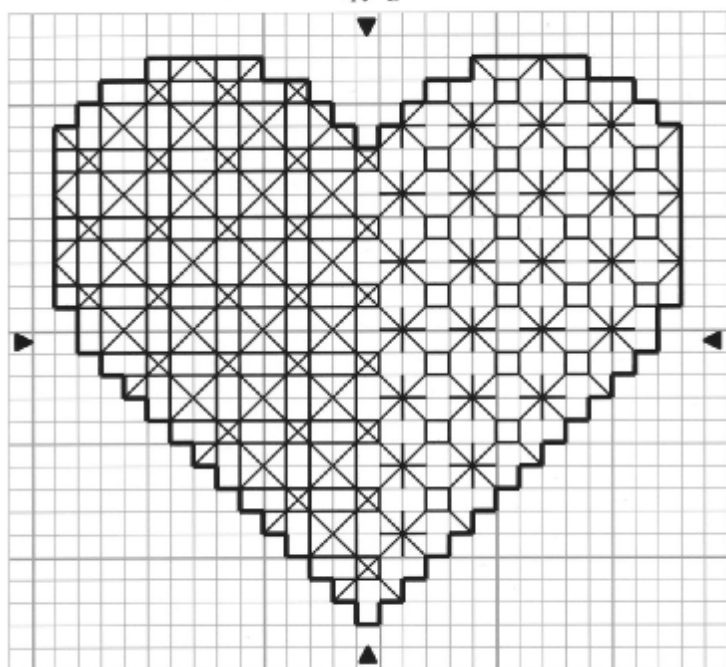


# Tom Pudding Designs

ere's your free chart for February 2004 - the design is 27 stitches wide x 25 stitches high.  
lick on the colour picture to see a larger image, then use your browser's back button to return here.



Valentine 2004 - copyright Jan Eaton 2004



se two strands of DMC 600 very dark cranberry to work the heart outline and one strand of the same thread for all the remaining lines.  
he Valentine 2004 chart was created by Jan Eaton. The design remains her property and is protected by copyright laws. You may print one  
opy of the chart from the Tom Pudding Designs website for your own personal use. You may not copy, scan or reproduce the chart or any  
art of the chart in any printed or electronic form without her written permission and you also may not use the design in any form for  
nancial gain or as a kit component or teaching aid. Valentine 2004 design © Jan Eaton 2004. All Rights Reserved.