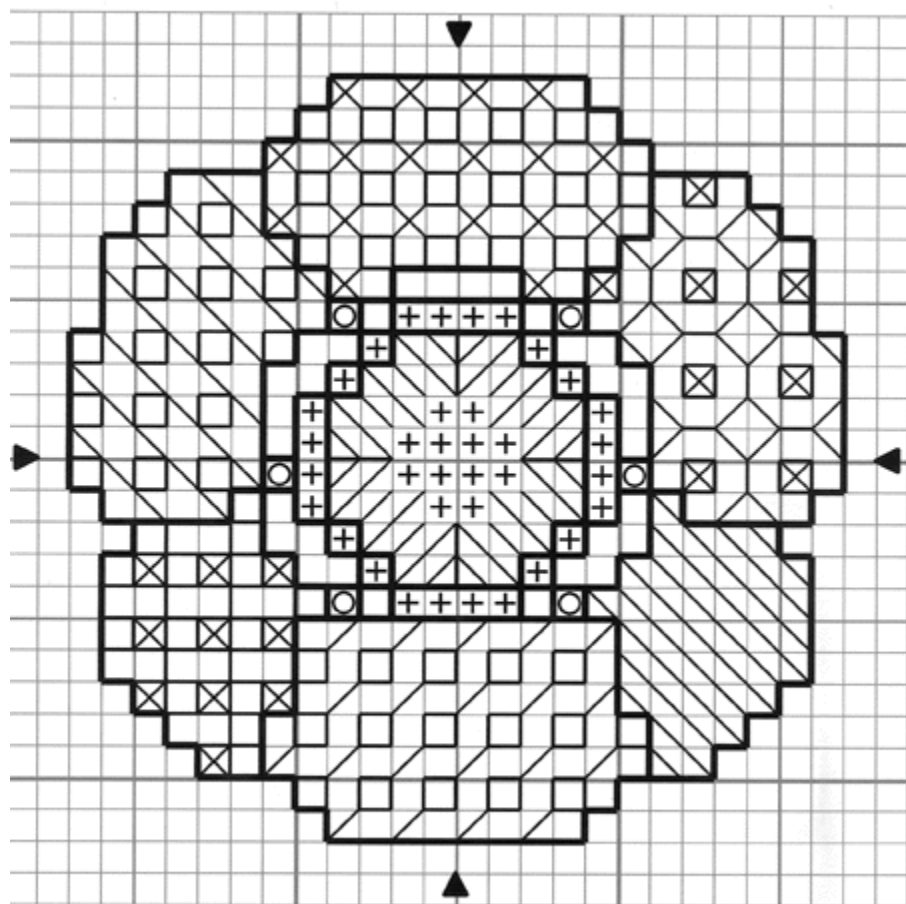


Tom Pudding Designs

Here's your free chart for July 2003 - the design is 24 stitches square. Click on the colour picture to see a larger image, then use your browser's back button to return here.



Blackwork Poppy - copyright Jan Eaton 2003



○ metallic gold seed bead

Two strands of DMC 498, dark Christmas red, for cross stitches (denoted by +) and heavy lines, one strand for the fine lines. The blackwork poppy chart was created by Jan Eaton. The design remains her property and is protected by copyright laws. You may print one copy of the chart from the Tom Pudding Designs website for your own personal use. You may not copy, scan or reproduce the chart or any part of the chart in any printed or electronic form without her written permission and you also may not use the design in any form for financial gain or as a kit component or teaching aid.