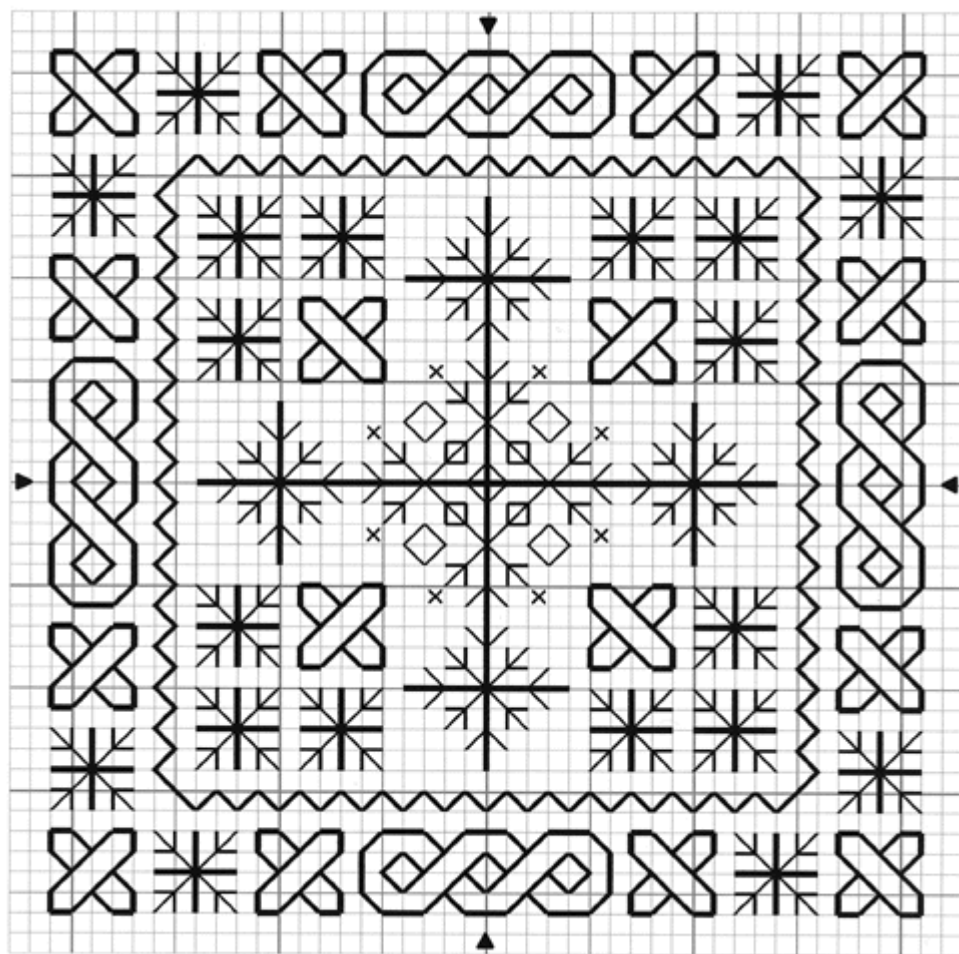
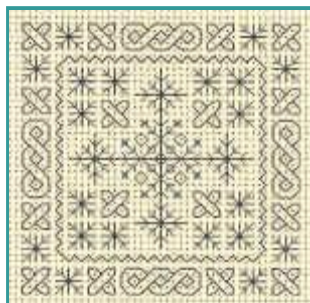


Tom Pudding Designs

Here's your free chart for November 2001 from Tom Pudding Designs - stitch this 42w x 42h blackwork design using two strands of DMC 3799 very dark pewter grey for the heavy lines and one strand for the fine lines. Each cross symbol on the chart represents a cross stitch - use two strands of the same thread. Click on the picture to see a larger image, then use your browser's back button to return here.



The winter blackwork chart was created by Jan Eaton. The design remains her property and is protected by copyright laws. You may print one copy of the chart from the Tom Pudding Designs website for your own personal use. You may not copy, scan or reproduce the chart or any part of the chart in any printed or electronic form without her written permission and you also may not use the design in any form for financial gain or as a kit component or teaching aid. Winter blackwork design © Jan Eaton 2001. All Rights Reserved.